

THE HOUSE

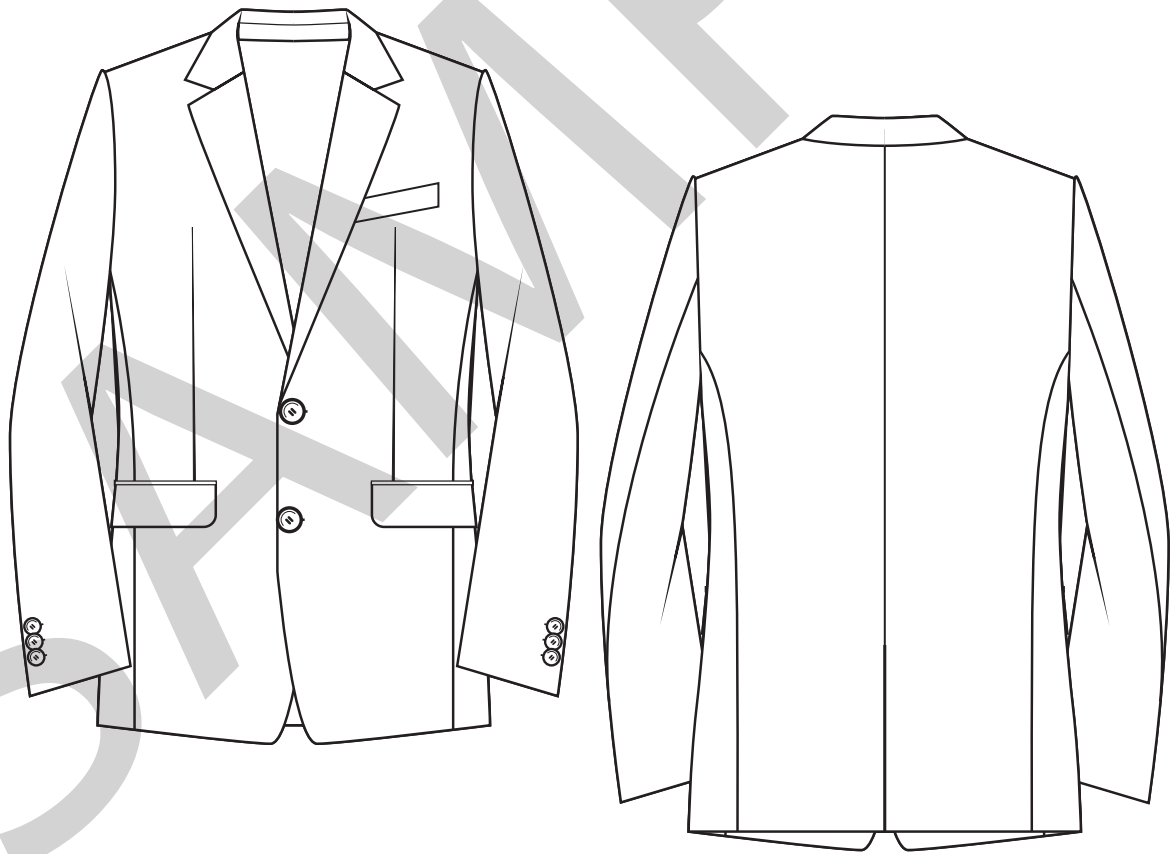
STYLE #: A100-2 FIT SAMPLE

MEN'S SUIT JACKET

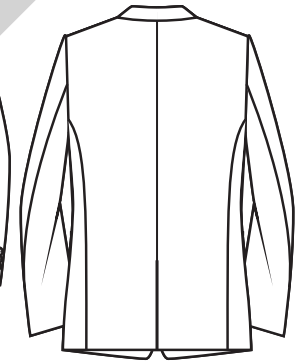
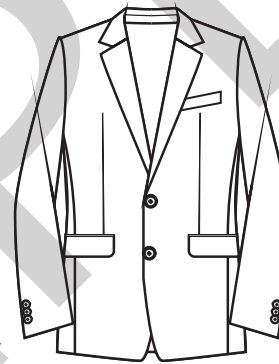
2 BUTTON FRONT (ROUND 4 HOLE BUTTON),

3 BUTTONS PER SLEEVE, NO BACK VENT

100% WOOL



GARMENT DETAILS



STYLE # A100-2 FIT SAMPLE

MEN'S SUIT JACKET

2 BUTTON FRONT (ROUND 4 HOLE BUTTON),
3 BUTTONS PER SLEEVE, NO BACK VENT

Men's 2 Button Front Suit Jacket featuring front welt pockets with pocket flaps, single welt breast pocket, interior welt pockets with button details, fully lined with 100% Viscose. Three buttons per sleeve. No Back vent. Round 4-hole buttons in dark navy or black. 100% Wool.

DETAILS

- Men's Suit Jacket
- 100% Wool
- 100% Viscose Lining
- 2 Front Welt Pockets with Pocket Flaps
- 1 Single Welt Breast Pocket
- 3 interior welt pockets with button detail
- 2 Buttons on Front (Round 4 hole Button in Black or Dark Navy)
- 3 Buttons Per Sleeve
- No Back Vent

Colors

100% Wool
100% Viscose Lining



Black



Dark Navy

FRONT VIEW

Style #: A100-2 FIT SAMPLE

Men's Suit Jacket, 2 Button Front,
3 Buttons Per Sleeve

Sample Size: 38

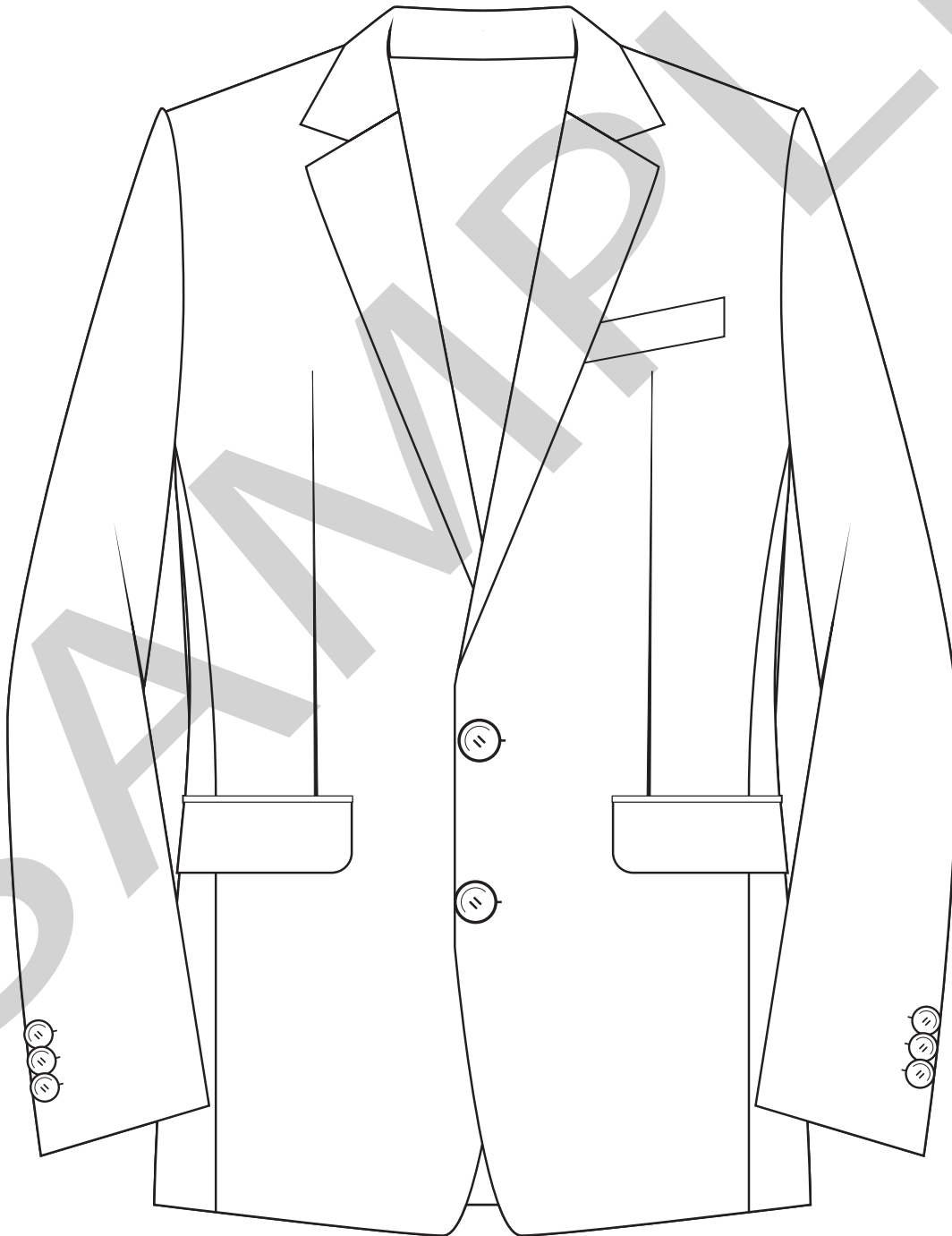
Fabric Content: 100% Wool
100% Viscose (Lining)

Sample Color: Black

Technical Designer: [REDACTED]

Product Manager:

Sourcing Manager:



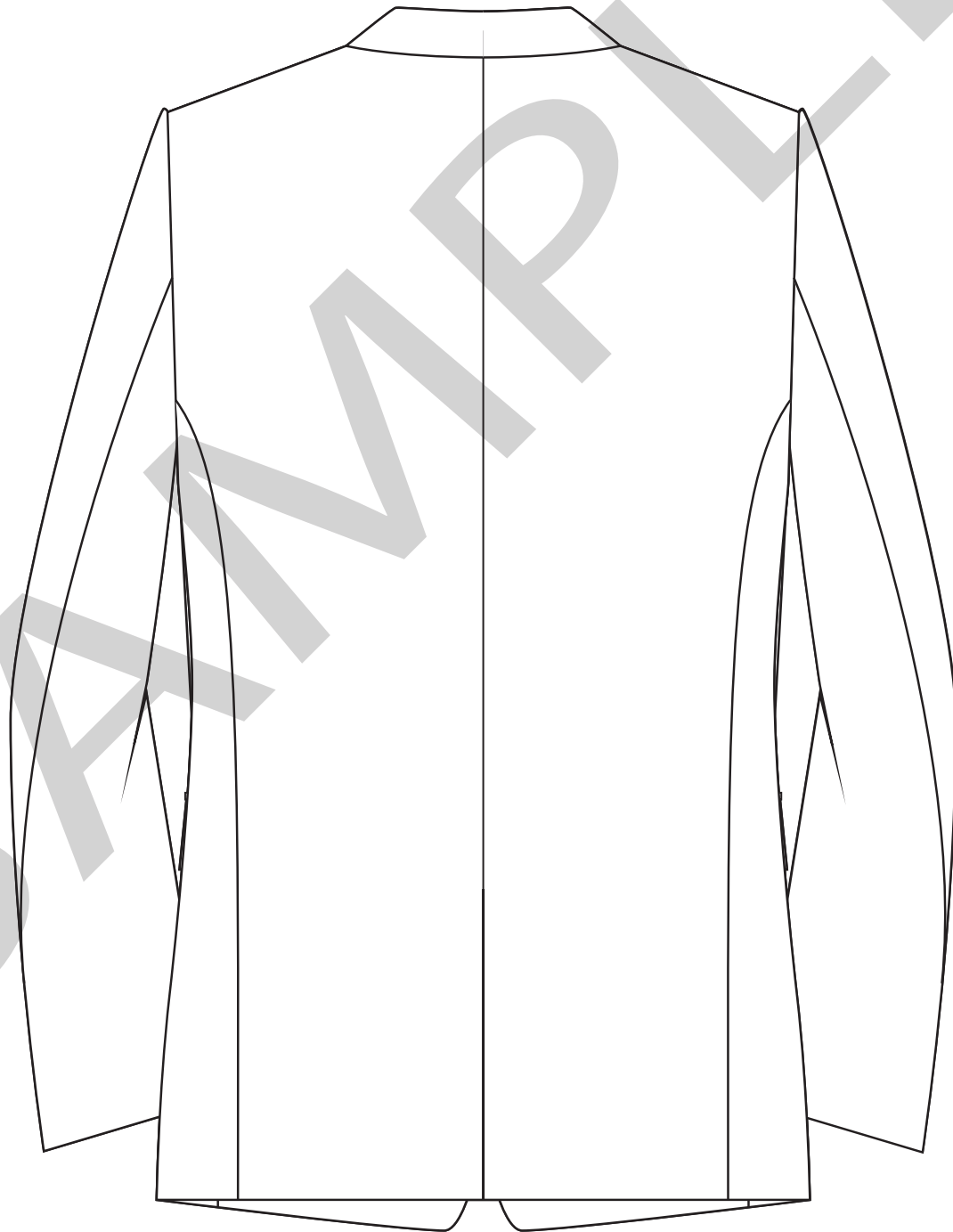
BACK VIEW

Style #: A100-2 FIT SAMPLE

Men's Suit Jacket, 2 Button Front,
3 Buttons Per Sleeve
Sample Size: 38

Fabric Content: 100% Wool
100% Viscose (Lining)
Sample Color: Black

Technical Designer: [REDACTED]
Product Manager:
Sourcing Manager:



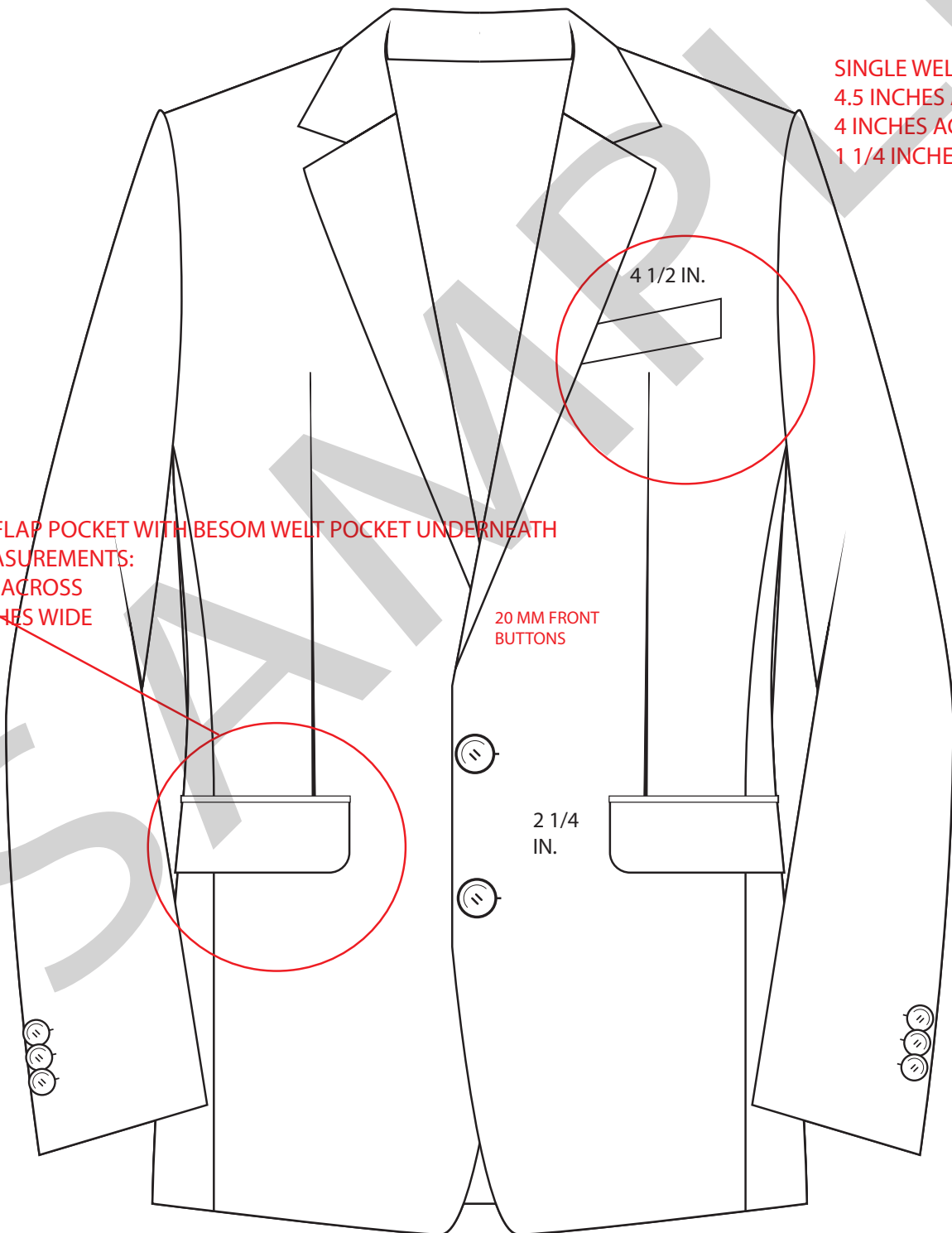
DETAILS VIEW

Style #: A100-2 FIT SAMPLE

Men's Suit Jacket, 2 Button Front,
3 Buttons Per Sleeve
Sample Size: 38

Fabric Content: 100% Wool
100% Viscose (Lining)
Sample Color: Black

Technical Designer: [REDACTED]
Product Manager:
Sourcing Manager:



SINGLE WELT POCKET
4.5 INCHES ACROSS TOP
4 INCHES ACROSS BOTTOM
1 1/4 INCHES WIDE ON SIDES

4 1/2 IN.

CLASSIC FLAP POCKET WITH BESOM WELT POCKET UNDERNEATH
FLAP MEASUREMENTS:
6 INCHES ACROSS
2 1/4 INCHES WIDE

20 MM FRONT
BUTTONS

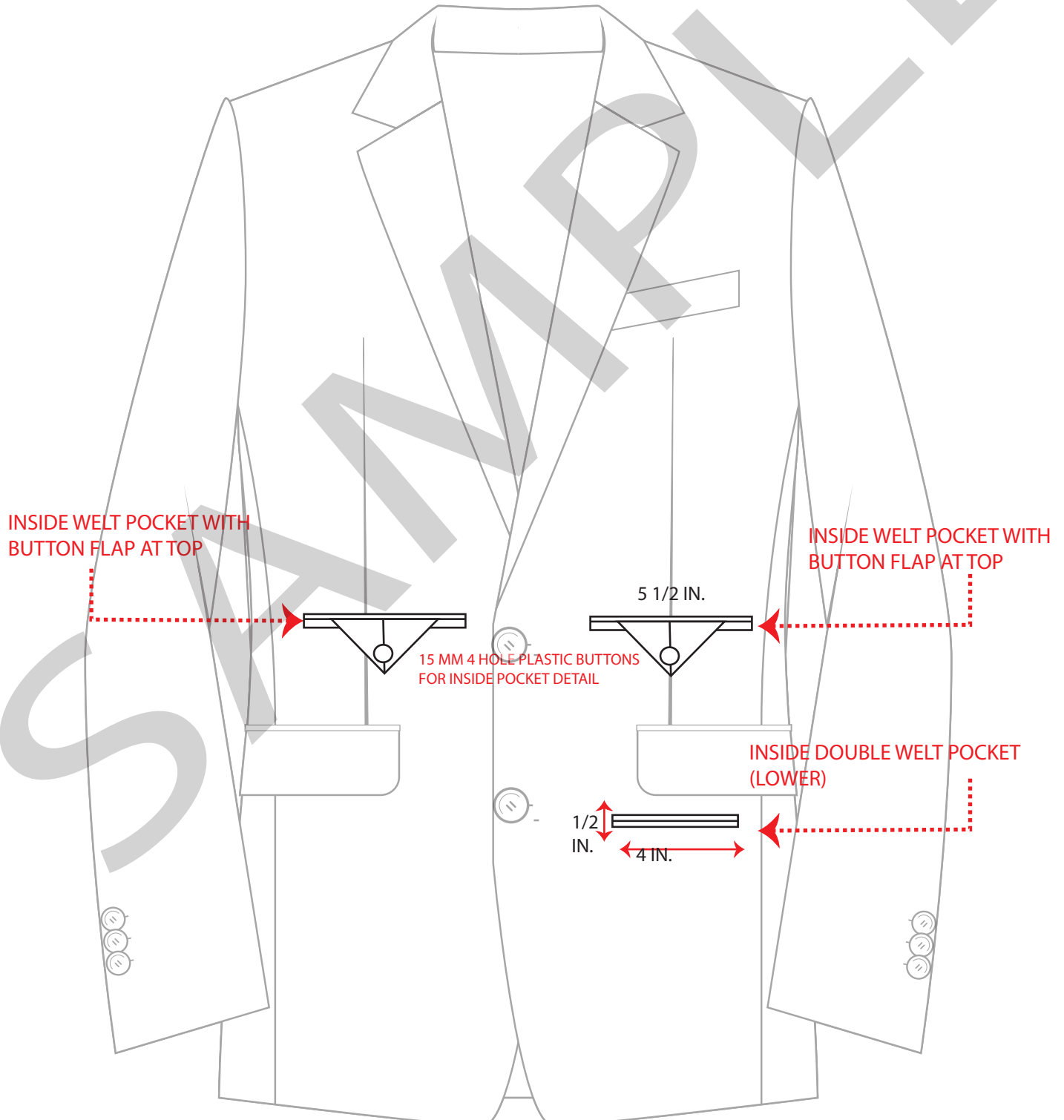
2 1/4
IN.

DETAILS VIEW

Style #: A100-2 FIT SAMPLE
Men's Suit Jacket, 2 Button Front,
3 Buttons Per Sleeve
Sample Size: 38

Fabric Content: 100% Wool
100% Viscose (Lining)
Sample Color: Black

Technical Designer: [REDACTED]
Product Manager: [REDACTED]
Sourcing Manager: [REDACTED]



MEASUREMENT CHART

Style #: A100-2 FIT SAMPLE

Men's Suit Jacket, 2 Button Front,
3 Buttons Per Sleeve
Sample Size: 38

Fabric Content: 100% Wool

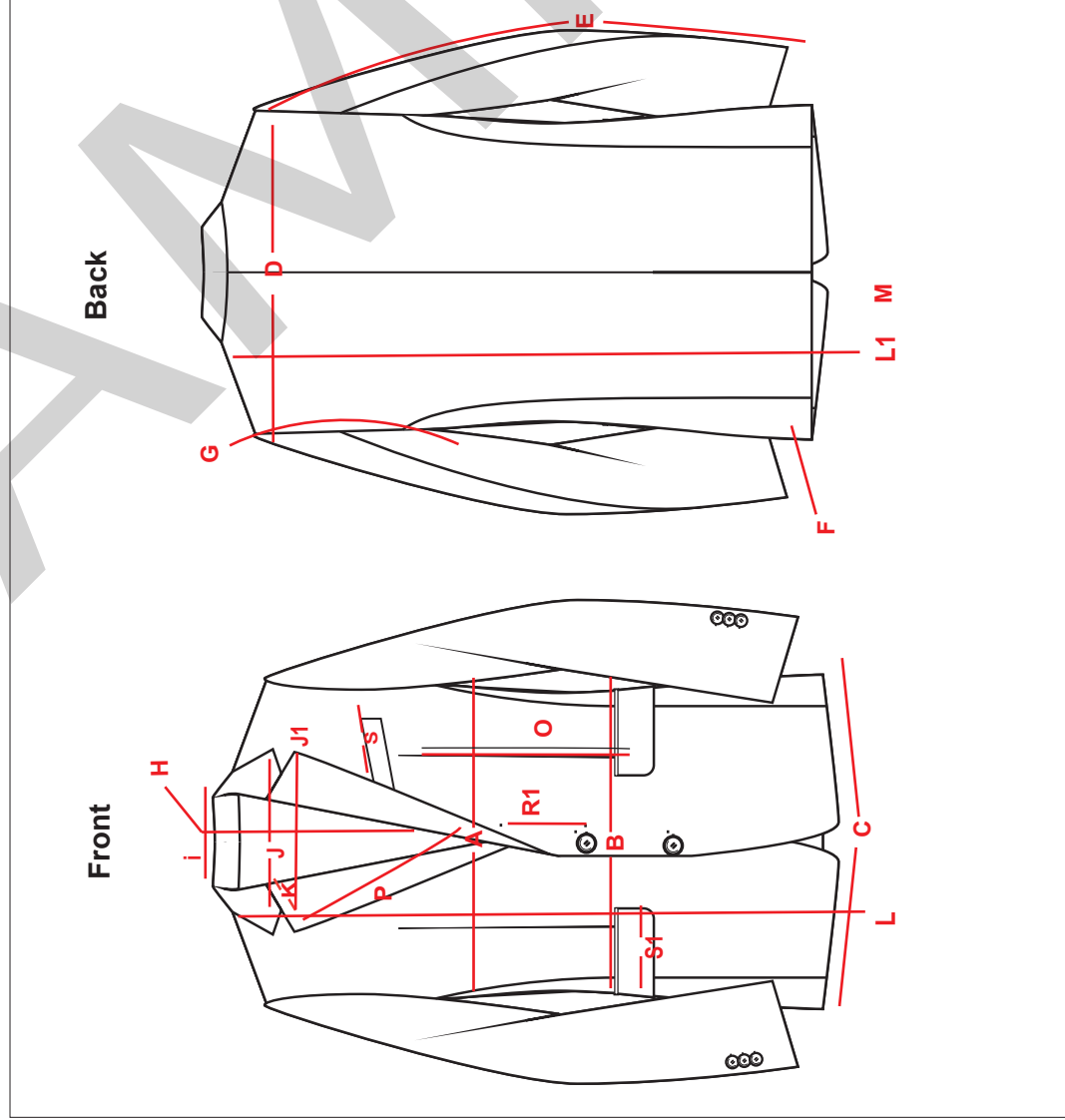
100% Viscose (Lining)

Sample Color: Black

Technical Designer: [REDACTED]

Product Manager:

Sourcing Manager:



- A 1/2 Chest: 21
- B 1/2 Waist: 20 3/4
- C 1/2 Bottom: 22 3/4
- D Shoulder to shoulder: 19
- E Sleeve length from CB: 34
- F 1/2 Sleeve opening: 6
- G Armhole (curve): 11
- H Collar drop: 14
- I Front length from HPS: 31 1/2
- J Back length from HPS: 31
- J1 Upper neckline: 4
- K Neck opening w/ collar: 9 1/4
- L Lapel opening: 9 1/2
- L1 Lapel width: 3 1/4
- M Lapel length: 12 1/2
- N Top Pocket width: 4 1/2 across top, 4 across bottom, 1 1/4 wide on sides
- O Classic Flap pocket no button, Flap width: 6 x 2 1/2
- P Front dart: 8 1/2
- R1 Distance between buttonholes: 5
- S Back Middle Seam: 30 1/4