
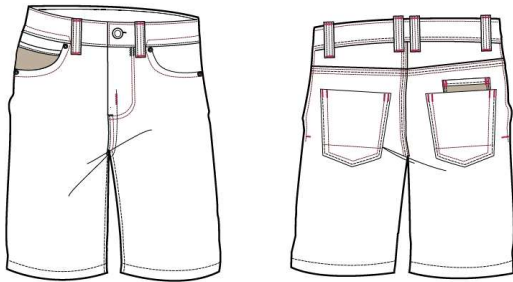


BS2RT79205MZ

Label	Route 66	Spring 2012	Date Folder Modified	03 MAY 2011 03:46 PM	
Size Range	B- 6-16	DENIM SHORT			
Big Boy	Ship Date		SHGS Sourcing	Catherine Loong	
Designer Natalie Hart	Technical Design	Buyer Stephanie Hulka	Sourcing	Howard Mohney	
Pre-Production	Lisa Valente	Carryover	Reference/LY #		

Fabric Description	8.7oz Flat Streaky Denim	SHGS TD		Manufacturing Country	
Fabric Content	70% Cotton 30% Poly	Date Sample Received		Vendor	
Fabric Construction	82x66/RSB13x450D+TSB14	Packaging Method	Hanging	Mill/Art#	
Fabric Weight	8.7	PDM Process	1	Floor Set Date	
Fabric Width		Fabric Finish/Wash	MED WASH W/ TINT + DP123	Merchant Requested	Yes
Fabric Code	DH2221	Additional Information		Adopted Style (YES/NO)	

BS2RT79205



Label	Route 66	Spring 2012	Date Folder Modified	03 MAY 2011 03:46 PM
Size Range	B- 6-16	DENIM SHORT		
Big Boy	Ship Date		SHGS Sourcing	Catherine Loong
Designer Natalie Hart	Technical Design	Buyer Stephanie Hulka	Sourcing	Howard Mohney
Pre-Production	Lisa Valente	Carryover	Reference/LY #	

Image Name: BS2RT79205BB

SEASON: SPRING 2012
 STYLE NO: BS2RT79205BB
 BUYER: STEPHANIE HULKA
 DESIGNER: NATALIE HART

DESC: SHORT
 BRAND: ROUTE 66
 DATE: 5/3/10



\$15.99
 BS2RT79205BB
 DH2221 MED W/ TINT
 DP123
 EST.COST \$7.00



	STITCHING	STITCHING	
(A)	(B)	(C)	ZIPPER TAPE & ELASTIC
MED W/ TINT	COATS C5784	COATS C8391	CAPTAIN'S BLUE 18-4020 TCX

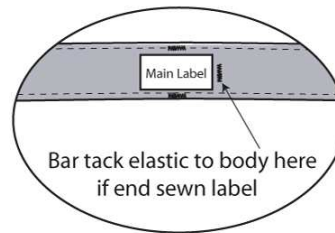
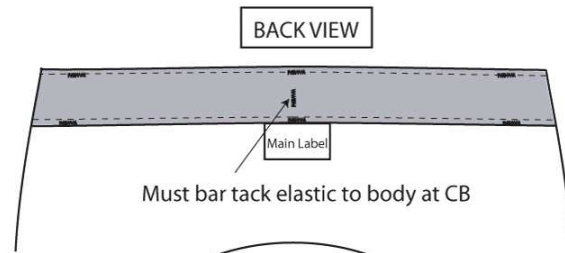
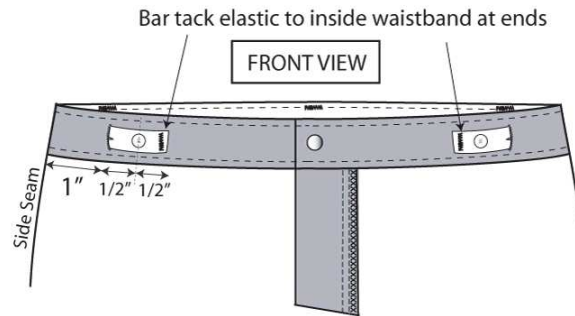
BS2RT79205MZ

Label	Route 66	Spring 2012	Date Folder Modified	03 MAY 2011 03:46 PM
Size Range	B- 6-16	DENIM SHORT		
Big Boy	Ship Date		SHGS Sourcing	Catherine Loong
Designer Natalie Hart	Technical Design	Buyer Stephanie Hulka	Sourcing	Howard Mohney
Pre-Production	Lisa Valente	Carryover	Reference/LY #	



Image Name: Adjustable Elastic Waist update S11

INSIDE ADJUSTABLE ELASTIC WAIST CONSTRUCTION STANDARD
(ALL SIZES)



8/08/07

All garments must follow Sears Holdings Minimum Construction Standards and Children's Product Manual. Artwork must be approved by Design

BS2RT79205MZ

Label	Route 66	Spring 2012	Date Folder Modified	03 MAY 2011 03:46 PM
Size Range	B- 6-16	DENIM SHORT		
Big Boy	Ship Date		SHGS Sourcing	Catherine Loong
Designer Natalie Hart	Technical Design	Buyer Stephanie Hulka	Sourcing	Howard Mohney
Pre-Production	Lisa Valente	Carryover	Reference/LY #	

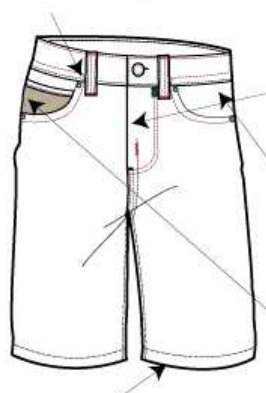
**Image Name: BS2RT79205**

SEAMS: 5 thread overlock safety stitch unless otherwise specified

CUTTING: Lengthwise grain

BELT LOOPS:

- A. Belt loop must be fused with interlining
- B. Two needle coverstitch center of belt loop
- C. Turn back edge of belt loop 1/4" and horizontal bar tack 1/16" from folded edge
- D. Horizontal bar tack at bottom of belt loop 1/16" from folded edge
- E. Inside raw edge must not exceed 3/8"

**FLY:**

- A. 2N lockstitch J stitching around fly, 1/4" gg
- B. 1/16" margin lockstitch at fly edge
- C. Vertical bar tack on outside of J stitch as shown
- D. zipper opening with 3/8" MG 1N topstitch Vertical bar tack as shown

SCOOP POCKET:

- Folder set bias strip at inside pocket opening
- Topstitch pocket 1N lockstitch; 1/4" margin
- Rivets at pocket openings

COIN POCKET (Wrong Side of Self Fabric):

- A. Finish pocket hem with 3/8" clean finished binding 1N topstitch, 1/16" MG
- B. Pocket finished into the side seam and pocket facing Bartack at pocket opening

LEG OPENING:

Double Fold, clean finish, 1/N topstitch

WAISTBAND:

- A. Folder set (clean finished inside and outside)
1 piece waistband with 1N chainstitch at top edge of waistband 1/4" GG 2N chainstitch at set seam
- B. Ends of waistband at center front are secured with lockstitch along 3 sides (top, front ends, and bottom), lockstitch must overlap chainstitch 3-5 stitches

YOKE / BACK RISE:

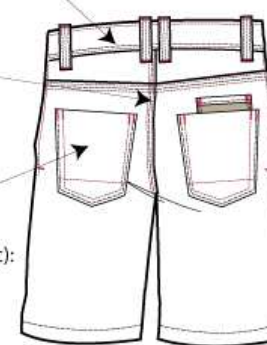
Felled seam with 1/16" MG 3N chainstitch topstitching, 1/8" GG

BACK POCKET:

- A. Pocket hem finished with self facing
- B. Outside edges of the pocket are turned under and 2N lockstitch pocket to body, 1/16" MG, 1/4" GG
- C. Vertical bartacks at pocket opening as per the sketch.

WEARER'S LEFT SMALL POCKET (Wrong Side of Self Fabric):


- A. Finish pocket hem with 3/8" clean finished binding 1N topstitch, 1/16" MG
- B. Pocket set with 2N topstitch, 1/16" MG, 1/4" GG

**CORDING STITCH:**

Side seam allowance pressed to back. 1N lockstitch 1/16" MG, beginning at waistband seam Bartack at end of stitch

All garments must follow Sears Holdings Minimum Construction Standards and Children's Product Manual. Artwork must be approved by Design

BS2RT79205MZ


Label	Route 66	Spring 2012	Date Folder Modified	03 MAY 2011 03:46 PM	
Size Range	B- 6-16	DENIM SHORT			
Big Boy	Ship Date		SHGS Sourcing	Catherine Loong	
Designer Natalie Hart	Technical Design	Buyer Stephanie Hulka	Sourcing	Howard Mohney	
Pre-Production	Lisa Valente	Carryover	Reference/LY #		

Company: Sears Holding Corporation	Sample Size: 12	Approval Note:	UOM: Imperial (in)
Product Type: Jean	Size Class: Boy		Shown As: Graded
	Approval Status: Neither approved nor rejected		

Size Range: K-4 -20

POM	Description	Tol (-)	Tol (+)	8	10	[12]	14	16					
WA60	Waist Straight Center of Band	-1/2	1/2	25	26 1/4	27 1/2	28 1/2	29 1/2					
BL00	Belt Loop Width	-0	0	1/2	1/2	1/2	1/2	1/2					
BL01	Belt Loop Length	-1/8	1/8	2 1/4	2 1/4	2 1/4	2 1/4	2 1/4					
ST67	Seat Placement up from Crotch	-0	0	3	3	3	3	3					
ST65	Seat Up from Crotch	-1/2	1/2	31 1/2	33	35	37	39					
FR52	Front Rise from Top of Garment Edge (curved)	-1/4	1/4	9 1/2	10 1/4	11	11 3/4	12 1/2					
BR51	Back Rise from Top of Garment Edge (curved)	-1/4	1/4	12 1/4	13	13 3/4	14 1/2	15 1/4					
TH51	Thigh- 1" below Crotch	-1/4	1/4	20 3/4	21 3/4	23	24 1/4	25 1/2					
LO60	Leg Opening--Knee	-1/4	1/4	18 1/4	18 3/4	19 1/2	20 1/4	21					
IN51	Inseam--Knee	-1/2	1/2	8 3/4	9 7/8	11	11 3/4	12 1/2					
WB20	Band Height- Waist- Bottom	-1/8	1/8	1 1/2	1 1/2	1 1/2	1 1/2	1 1/2					
YH06	Yoke Height at Center Back- Bottom	-1/8	1/8	2	2	2	2	2					
YH08	Yoke Height at Side Seam- Bottom	-1/8	1/8	1 1/4	1 1/4	1 1/4	1 1/4	1 1/4					
FR66	"J" Stitch Length	-1/8	1/8	5	5	5	5 1/2	5 1/2					
FR67	"J" Stitch Width	-0	0	1 1/4	1 1/4	1 1/4	1 1/4	1 1/4					
HH01	Hem Height--Leg Opening	-1/8	1/8	1	1	1	1	1					
	FRONT POCKET												
PB85	Front Pocket Bag Length	-1/4	1/4	10	10	10	10	10					
PB86	Front Pocket Bag Width	-1/4	1/4	6	6	6	6	6					
PP86	Front Pocket Placement- Vertical from Waist	-1/8	1/8	2 1/2	2 1/2	2 1/2	2 1/2	2 1/2					
PP87	Front Pocket Placement- Horizontal from Side Seam	-1/8	1/8	3 3/8	3 5/8	3 7/8	3 7/8	3 7/8					
	COIN POCKET												
CP54	Coin Pocket Placement- Waistband Seam	-1/8	1/8	1/2	1/2	1/2	1/2	1/2					
	BACK POCKET												
PW92	Pocket Width at Top Edge--General	-1/8	1/8	5 1/4	5 1/2	5 1/2	5 1/2	5 1/2					
PW93	Pocket Width at Bottom--General	-1/8	1/8	4 1/4	4 1/2	4 1/2	4 1/2	4 1/2					
PP88	Pocket Placement- Distance from Yoke at Side Seam	-1/8	1/8	1 3/4	1 3/4	1 3/4	1 3/4	1 3/4					
PP89	Pocket Plcmnt- Distance from Yoke near Center Back	-1/8	1/8	1 1/4	1 1/4	1 1/4	1 1/4	1 1/4					
PH90	Pocket Height at Center--General	-1/8	1/8	5 1/4	5 1/2	5 1/2	5 1/2	5 1/2					
PH91	Pocket Height at Side--General	-1/8	1/8	4	4 1/4	4 1/4	4 1/4	4 1/4					

BS2RT79205MZ


Label	Route 66	Spring 2012	Date Folder Modified	03 MAY 2011 03:46 PM	
Size Range	B- 6-16	DENIM SHORT			
Big Boy	Ship Date		SHGS Sourcing	Catherine Loong	
Designer Natalie Hart	Technical Design	Buyer Stephanie Hulka	Sourcing	Howard Mohney	
Pre-Production	Lisa Valente	Carryover	Reference/LY #		

Company: Sears Holding Corporation	Sample Size: 5	Approval Note:	UOM: Imperial (in)
Product Type: Jean	Size Class: Boy		
	Approval Status: Neither approved nor rejected		Shown As: Graded

Size Range: K-4 -20

P O M	Description	Tol (-)	Tol (+)	4	[5]	6	7	20					
WA60	Waist Straight Band	-1/2	1/2	23	23 1/2	24	24 1/2						
BL00	Belt Loop Width	-0	0	1/2	1/2	1/2	1/2						
BL01	Belt Loop Length	-1/8	1/8	2 1/4	2 1/4	2 1/4	2 1/4						
ST67	Seat Placement up from Crotch	-0	0	2 1/2	2 1/2	2 1/2	2 1/2						
ST65	Seat Up from Crotch	-1/2	1/2	27 1/2	28 1/2	29 1/2	30 1/2						
LO60	Leg Opening- Straight--Knee	-1/4	1/4	16 1/8	16 1/2	16 7/8	17 1/4						
TH51	Thigh- 1" below Crotch	-1/4	1/4	18 3/8	19	19 5/8	20 1/4						
FR52	Front Rise from Top of Garment Edge (curved)	-1/4	1/4	8 1/8	8 3/4	9 3/8	9 3/4						
BR51	Back Rise from Top of Garment Edge(curved)	-1/4	1/4	11 3/8	12	12 5/8	13						
IN51	Inseam--Knee	-1/2	1/2	6 7/8	7 5/8	7 7/8	8 1/4						
WB20	Band Height- Waist- Bottom	-1/8	1/8	1 1/2	1 1/2	1 1/2	1 1/2						
YH06	Yoke Height at Center Back- Bottom	-1/8	1/8	1 5/8	1 5/8	1 5/8	1 5/8						
YH08	Yoke Height at Side Seam- Bottom	-1/8	1/8	7/8	7/8	7/8	7/8						
FR66	"J" Stitch Length	-1/8	1/8	4 1/4	4 1/4	4 3/4	4 3/4						
FR67	"J" Stitch Width	-0	0	1 1/4	1 1/4	1 1/4	1 1/4						
HH01	Hem Height--Leg Opening	-1/8	1/8	1	1	1	1						
	FRONT POCKET												
PB85	Front Pocket Bag Length	-1/4	1/4	8 1/2	8 1/2	8 1/2	8 1/2						
PB86	Front Pocket Bag Width	-1/4	1/4	5 1/2	5 1/2	5 1/2	5 1/2						
PP86	Front Pocket Placement- Vertical from Waist	-1/8	1/8	2 1/8	2 1/8	2 1/8	2 1/8						
PP87	Front Pocket Placement- Horizontal from Side Seam	-1/8	1/8	3	3	3	3						
	COIN POCKET												
CP54	Coin Pocket Placement- Waistband Seam	-1/8	1/8	1/2	1/2	1/2	1/2						
	BACK POCKET												
PH90	Pocket Height at Center--General	-1/8	1/8	4 1/2	4 1/2	4 1/2	4 1/2						
PH91	Pocket Height at Side--General	-1/8	1/8	3 1/4	3 1/4	3 1/4	3 1/4						
PW92	Pocket Width at Top Edge--General	-1/8	1/8	4 1/2	4 1/2	4 1/2	4 1/2						
PW93	Pocket Width at Bottom--General	-1/8	1/8	3 1/2	3 1/2	3 1/2	3 1/2						
PP88	Pocket Placement- Distance from Yoke at Side Seam	-1/8	1/8	1 1/2	1 1/2	1 1/2	1 1/2						
PP89	Pocket Plcmnt- Distance from Yoke near Center Back	-1/8	1/8	1	1	1	1						

BS2RT79205MZ


Label	Route 66	Spring 2012	Date Folder Modified	03 MAY 2011 03:46 PM	
Size Range	B- 6-16	DENIM SHORT			
Big Boy	Ship Date		SHGS Sourcing	Catherine Loong	
Designer Natalie Hart	Technical Design	Buyer Stephanie Hulka	Sourcing	Howard Mohney	
Pre-Production	Lisa Valente	Carryover	Reference/LY #		

Company: Sears Holding Corporation	Sample Size: 12H	Approval Note:	UOM: Imperial (in)
Product Type: Jean	Size Class: Husky Boy		Shown As: Graded
	Approval Status: Neither approved nor rejected		


Size Range: 8H-18H


P O M	Description	Tol (-)	Tol (+)	8H	10H	[12H]	14H	16H	18H				
WA60	Waist Straight Band	-1/2	1/2	27	28 1/4	29 1/2	30 1/2	31 1/2	32 1/2				
BL00	Belt Loop Width	-0	0	1/2	1/2	1/2	1/2	1/2	1/2				
BL01	Belt Loop Length	-1/8	1/8	2 1/4	2 1/4	2 1/4	2 1/4	2 1/4	2 1/4				
ST67	Seat Placement up from Crotch	-0	0	3	3	3	3	3	3				
ST65	Seat Up from Crotch	-1/2	1/2	34	35 1/2	37 1/2	39 1/2	41 1/2	43				
FR52	Front Rise from Top of Garment Edge (curved)	-1/4	1/4	10	10 3/4	11 1/2	12 1/4	13	13 1/2				
BR51	Back Rise from Top of Garment Edge(curved)	-1/4	1/4	12 3/4	13 1/2	14 1/4	15	15 3/4	16 1/4				
TH51	Thigh- 1" below Crotch	-1/4	1/4	22	23	24 1/4	25 1/2	26 3/4	27 3/4				
LO60	Leg Opening- Straight--Knee	-1/4	1/4	18 3/4	19 1/4	20	20 3/4	21 1/2	22				
IN51	Inseam--Knee	-1/2	1/2	9 3/4	10 7/8	12	12 3/4	13 1/2	13 3/4				
WB20	Band Height- Waist- Bottom	-1/8	1/8	1 1/2	1 1/2	1 1/2	1 1/2	1 1/2	1 1/2				
YH06	Yoke Height at Center Back- Bottom	-1/8	1/8	2	2	2	2	2	2				
YH08	Yoke Height at Side Seam- Bottom	-1/8	1/8	1 1/4	1 1/4	1 1/4	1 1/4	1 1/4	1 1/4				
FR66	"J" Stitch Length	-1/8	1/8	5 1/4	5 3/4	5 3/4	6 1/4	6 1/4	6 3/4				
FR67	"J" Stitch Width	-0	0	1 1/4	1 1/4	1 1/4	1 1/4	1 1/4	1 1/4				
HH01	Hem Height--Leg Opening	-1/8	1/8	1	1	1	1	1	1				
	FRONT POCKET												
PB85	Front Pocket Bag Length	-1/4	1/4	10	10	10	10	10	10				
PB86	Front Pocket Bag Width	-1/4	1/4	6	6	6	6	6	6				
PP86	Front Pocket Placement- Vertical from Waist	-1/8	1/8	2 1/2	2 1/2	2 1/2	2 1/2	2 1/2	2 1/2				
PP87	Front Pocket Placement- Horizontal from Side Seam	-1/8	1/8	4	4	4	4	4	4				
	COIN POCKET												
CP54	Coin Pocket Placement- Waistband Seam	-1/8	1/8	1/2	1/2	1/2	1/2	1/2	1/2				
	BACK POCKET												
PW92	Pocket Width at Top Edge--General	-1/8	1/8	5 3/4	6	6	6	6	6				
PW93	Pocket Width at Bottom--General	-1/8	1/8	4 3/4	5	5	5	5	5				
PP88	Pocket Placement- Distance from Yoke at Side Seam	-1/8	1/8	1 3/4	1 3/4	1 3/4	1 3/4	1 3/4	1 3/4				
PP89	Pocket Plcmnt- Distance from Yoke near Center Back	-1/8	1/8	1 1/4	1 1/4	1 1/4	1 1/4	1 1/4	1 1/4				
PH90	Pocket Height at Center--General	-1/8	1/8	5 3/4	6	6	6	6	6				
PH91	Pocket Height at Side--General	-1/8	1/8	4 1/2	4 3/4	4 3/4	4 3/4	4 3/4	4 3/4				


BS2RT79205MZ

Label	Route 66	Spring 2012	Date Folder Modified	03 MAY 2011 03:46 PM	
Size Range	B- 6-16	DENIM SHORT			
Big Boy	Ship Date		SHGS Sourcing	Catherine Loong	
Designer Natalie Hart	Technical Design	Buyer Stephanie Hulka	Sourcing	Howard Mohney	
Pre-Production	Lisa Valente	Carryover	Reference/LY #		

			N/A:	N/A							Image
			Combination:								
Item / Category	Item Information	Item Information Detail									
DH2221	User comments:	W / Sz: 58"		N/A							
8.7oz Flat Streaky Denim	Finish:	Wt: 8.7									
	Item Content: 70% Cotton 30% Poly	V Name:									
	Constr: 82x66/RSB13x450D+TSB14	Origin:									
Fabric	Finish: MED WASH W/ TINT + DP123										
Use: BODY											
Item Master Comments: Unitex Ltd, CT0037-1, 58/60", \$3.10/yd											

Metal Zipper 4.5	User comments:	W / Sz:	4.5 / Antique Brass								
Closed Metal Zipper 4.5 SEMI LOCK	Finish: Closed End Metal Zipper	Wt:									
	Item Content:	V Name:									
	Constr:	Origin:									
Closure	Finish:		1								
Use: FLY											

1625RT-E-LSB	User comments:	W / Sz:	Antique Brass / 30L								
Route 66 tarnished open center shank	Finish:	Wt:									
	Item Content:	V Name: Lamcom									
	Constr:	Origin:									
Packaging & Labeling	Finish:		1								
Use: WAIST SIZES 8-16											

1627RT/E-LS	User comments:	W / Sz:	Antique Brass / 27L								 <p>1627RT/E-LS 27L</p>
RT 66 logo metal SHANKS	Finish:	Wt:									
	Item Content:	V Name:									
	Constr:	Origin:									
Packaging & Labeling	Finish:		1								
Use: WAIST SIZES 6-7											

Label	Route 66	Spring 2012	Date Folder Modified	03 MAY 2011 03:46 PM
Size Range	B- 6-16	DENIM SHORT		
Big Boy	Ship Date		SHGS Sourcing	Catherine Loong
Designer Natalie Hart	Technical Design	Buyer Stephanie Hulka	Sourcing	Howard Mohney
Pre-Production	Lisa Valente	Carryover	Reference/LY #	



1

Packaging -
Garment to be shipped with legs rolled.
Please follow following photos for direction.
Step 1



2

Step 2



3

Packaging -
Step 3



4

Step 4



Empty space for additional text or notes.