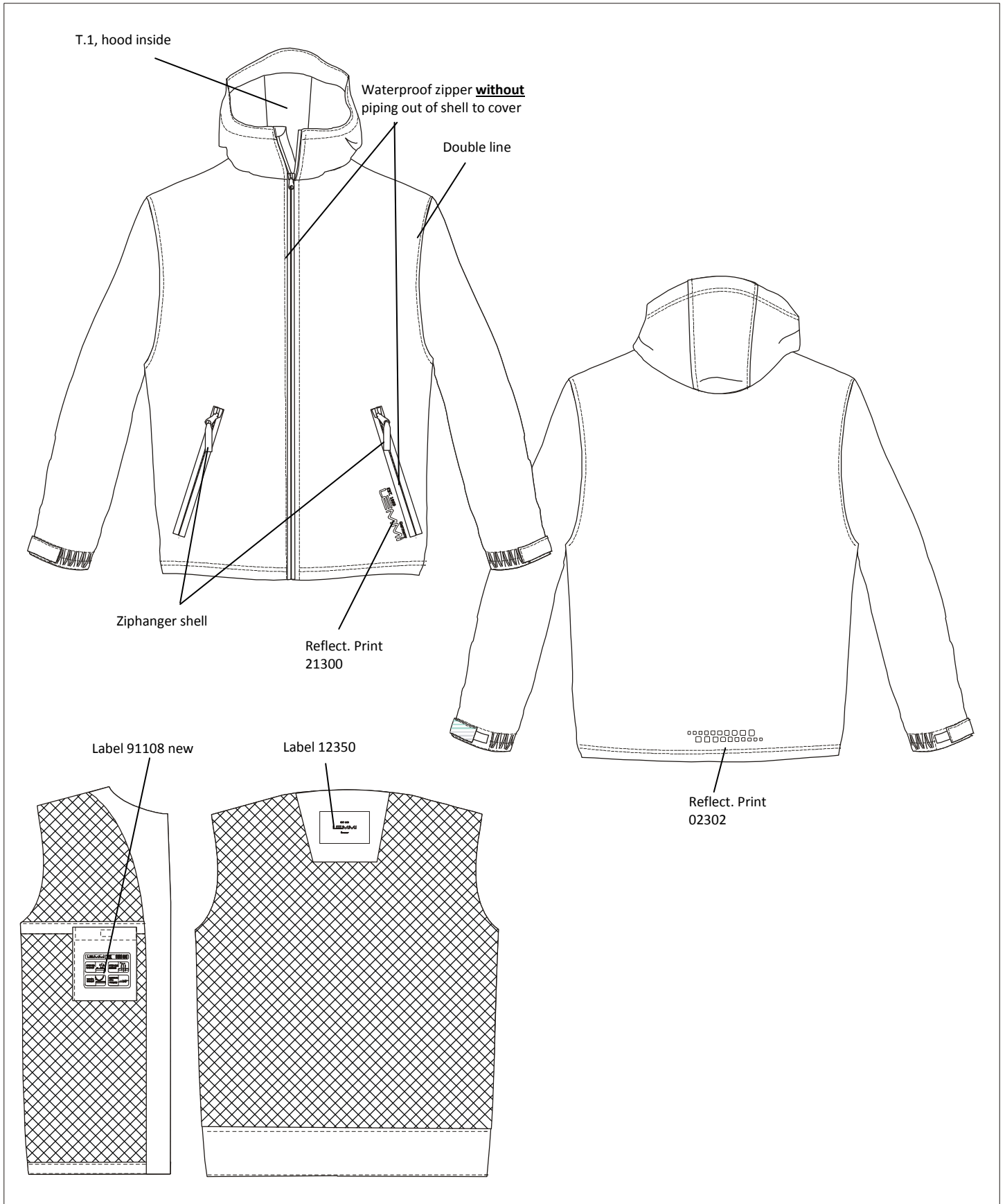


T/S original		Season:	Spring 2012 coll.121	Date:	12.06.2011	Prod. place:	V3	
Group:	Boys Jackets	Treatment	---				Sample size :	140/104
Style:	5701540	Attention:	LEMMITEX jacket Tape all seams				Size range :	128-176
Style:	5200900						Size range :	80-122
Art.:	270 allover					Page:	1	



T/S original		Season:	Spring 2012 coll.121	Date:	12.06.2011	Prod. place:	V3
Group:	Boys Jackets	Treatment	---			Sample size :	140/104
Style:	5701540	Attention:	LEMMITEX jacket Tape all seams			Size range :	128-176
Style:	5200900					Size range :	80-122
Art.:	270 allover				Page:	3	

Accessories:	Quality / col.	Position:	Col.	1	2	3	Quan.
Zipper	RT10 waterproof matt, open end, mosel slider	front	YKK	white (L-100)			1
Zipper	RT0 waterproof matt, closed end, mosel slider	Pkts.	YKK	white (L-100)			2
Zipper							
Zipper							
Zipper hanger	zip.hanger shell	pkts	L-	269			2
10 mm rubber	---						
15 mm rubber	---						
35 mm rubber	Soft quality	Sleeve cuffs		white			
Rivets	---						
Eyelets	X	Bottom string	L-	100			4
New Lemmi pressbutton	---						
Pressbutton 126 19 4	---						
Elastic-String no.2	X	Bottom string	L-	120			
3 mm string	---						
String stopper	3805 C			alu			2
Magic tape 1cm	---						
Magic tape 2cm	X	2xSleeve cuffs, 1pkt. inside	L-	269			3
Salesman sample hangtag	LEMMI	Fixed at left side seam inside, outside not visible					1
RFID-Label	LEMMI	Fixed at left sleeve lining seam at bottom inside w / 65 mm plastic thread					1
Add. hangtag	LEMMITEX	Fixed w / nylon loop at front zipper slider, hanging outside jkt					1
Add. hangtag	REFLEKTOREN	Fixed together w/LEMMITEX w / nylon loop at front zipper slider, hanging outside jkt					1
Seaming	75/3 col. match.						
Oversewing shell	50/3 col.match			1634			
Oversewing	75/3 col.match						
Overlocking	col. match.						
Bartacks	75/3 see oversewing			1634			
Washing label LEMMI Fashion Art. 270	Add.: No.3 + No.4+ No 7			washing chlorinate tumbler ironing dry-cleaning 30° X X * X			
Futter / lining: Art. 032							
Ärmel Futter / sleeves lining: Art. 003							

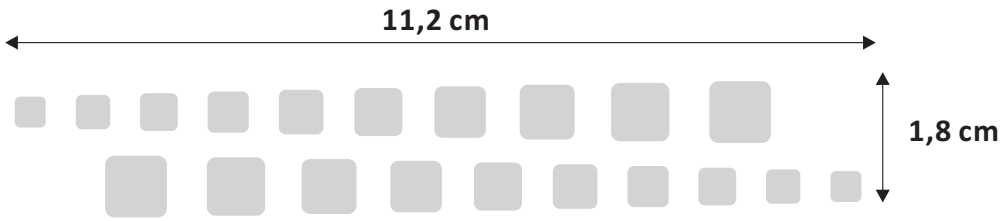
T/S original		Season:	Spring 2012 coll.121	Date:	12.06.2011	Prod. place:	V3	
Group:	Boys Jackets	Treatment	---				Sample size :	140/104
Style:	5701540	Attention:	LEMMITEX jacket Tape all seams				Size range :	128-176
Style:	5200900						Size range :	80-122
Art.:	270 allover					Page:	4	



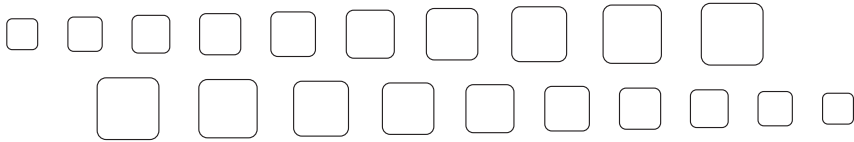
LEMMi		Measurementcharts for JACKETS								Season: SPRING:2011			Date: 26.08.2010
		Style : 5701540								P/T NO.			5701540
						only for quotation				Variant:			5701540
SIZE:	116	122	128	134	140	146	152	158	164	170	176	GRÖSSE	
1.	BACK LENGTH	463	493	523	543	563	581	600	621	640	660	691	Rückenlänge
2.	SHOULDER LENGTH	94	100	106	112	118	124	130	136	143	149	155	Schulterbreite
3.	SLEEVE LENGTH	430	443	468	486	505	529	552	578	600	623	648	Ärmellänge
4.	SLEEVE CUFFS RUBBER	110	120	120	120	130	130	130	130	140	140	140	Ärmelbündchen
5.	1/2 CHEST	410	420	435	450	465	485	505	525	545	665	585	halbe Oberweite
6.	FRONT ZIPPER	505	535	565	585	605	520	640	660	680	700	730	RV. - vorn
7.	POCKET ZIPPER	130	140	150	160	160	160	170	170	180	180	180	RV. - Tasche
8.	HOOD ZIPPER												RV. Kap.
9.	ELASTIC - STRING - HOOD												Gummi - Kap.
10.	PRESSBUTTON HOOD												Knöpfe - Ka.
11.	PRESSBUTTON												Drucker
12.	MOTIV NR. 02303	100%	100%	100%	100%	100%	100%	100%	100%	100%	100%	100%	
13.	MOTIV NR. 11303	100%	100%	100%	100%	100%	100%	100%	100%	100%	100%	100%	
14.	STRING WAIST GIRTH												
	008/100 to tape all seams	FOR ALL SIZES					8.50	METER					
	STRING 3mm	FOR ALL SIZES						METER					

LEMMI		Measurementcharts for JACKETS								Season: SPRING 2012			Date: 10.06.2011
		Style : 5200900								P/T NO.			5200900
						only for quotation				Variant:			5200900
SIZE:	80	86	92	98	104	110	116	122	128	134	140	GRÖSSE	
1.	BACK LENGTH	350	370	390	410	430	450	465	485	500			Rückenlänge
2.	SLEEVE LENGTH	280	300	320	340	360	380	400	420	440			Ärmellänge
3.	SLEEVE CUFFS	90	90	95	95	100	100	105	105	110			1/2 Ärmelbündchen
4.	1/2 CHEST	335	345	355	365	375	385	395	405	415			halbe Oberweite
5.	PRESSBUTTON												Drucker
6.	SHOULDER	76	80	83	87	91	94	98	101	104			Schulter
7.	FRONT ZIPPER	345	365	385	405	425	445	465	485	505			RV - vorn
8.	POCKET ZIPPER	105	105	110	110	110	120	120	120	130			RV - Tasche
9.	HOOD RUBBER												Kapuzengummi
10.	MOTIVE NO. 21300	100%	100%	100%	100%	100%	100%	100%	100%	100%			
11.	MOTIVE NO. 02302	100%	100%	100%	100%	100%	100%	100%	100%	100%			
12.													
13.													
14.													
	008/100 to tape all seams	FOR ALL SIZES					10	METER					
	STRING 3mm	FOR ALL SIZES					-	METER					

Motiv: 02302	Kind: reflective print
Size: original	Enlarge to: --
Colourno.: L-120	Style: 5701170



Reflective printing ink



Motiv: 21300	Kind: reflective print
Size: original	Enlarge to: --
Colourno.: L-120	Style: ---



Reflective printing ink

