

American Airlines Vest

Image | Image | Production | 2005 | Annual
Finished Product

MR4255

Created By: StrideLdr 03-15-2008
Modified By: Walterl 08-23-2010

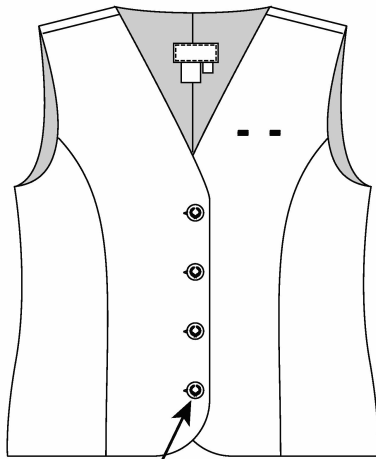


Page Type: Product Summary

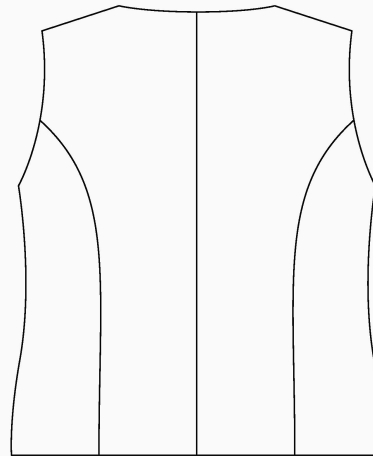
Page Name: Product Summary

PG Modified By: Walterl 08-23-2010

Brand	American Airlines	Production Status	Production
Tech Pack Type	Design	Gender/Type	Female
Tech Designer	Leslie Walter	Product Type	Tailored
Sub-Product Type	Vest	Development #	05-735MR
Style Based On	MR4155	Pattern #	VF-6508
Initiating Merchandiser	Folder Validated	Sector	Services
Size Scale		Fit Chart	



WREATH DESIGN
METAL SHANK BUTTON



Comments

Smartsizing: LJ-0002
American Airlines Vest
*Semi-fitted, fully lined, v-neckline
*Front and back princess seams from armholes
*Nameplate/wingpin eyelets at Left Upper Front
*4-button center front closure

American Airlines Vest

Image | Image | Production | 2005 | Annual
Finished Product

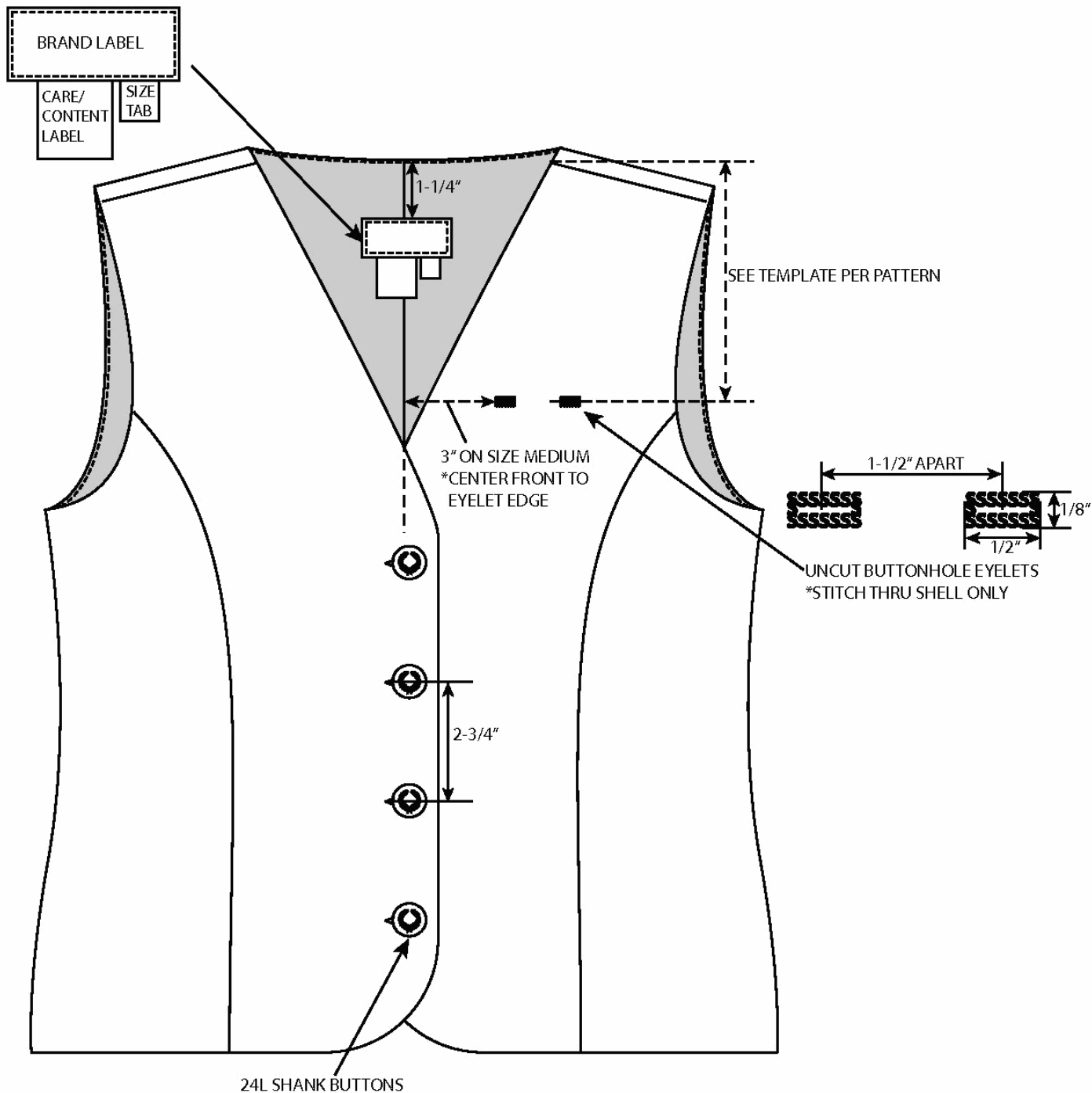
MR4255

Modified By: Walterl 08-23-2010 01:58 PM
Created By: StrideLdr 03-15-2008 03:41 AM



Page Name: Construction Details

PG Modified By:



Name mr4155fclscopy

Description front callouts

American Airlines Vest

Image | Image | Production | 2005 | Annual
Finished Product

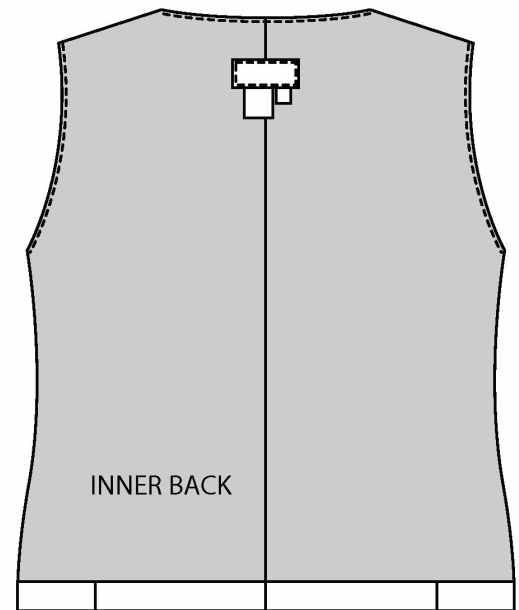
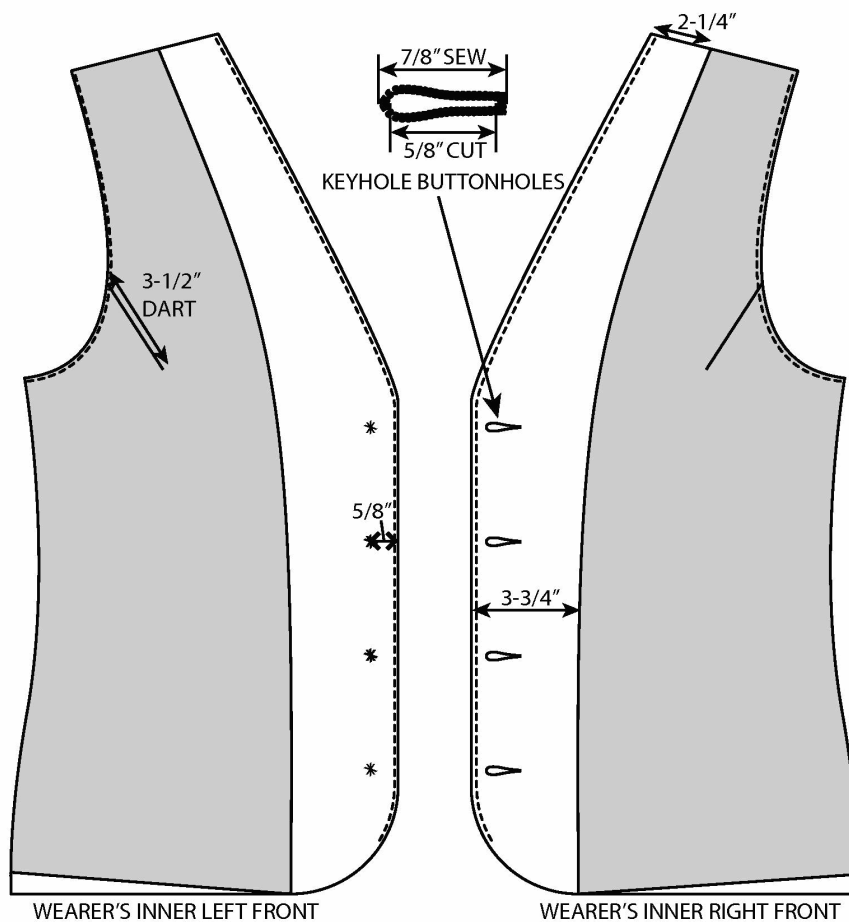
MR4255

Modified By: Walterl 08-23-2010 01:58 PM
Created By: StrideLdr 03-15-2008 03:41 AM



Page Name: Construction Details

PG Modified By:



Name MR4155inrF

Description inner front inner back view

American Airlines Vest

Image | Image | Production | 2005 | Annual
Finished Product

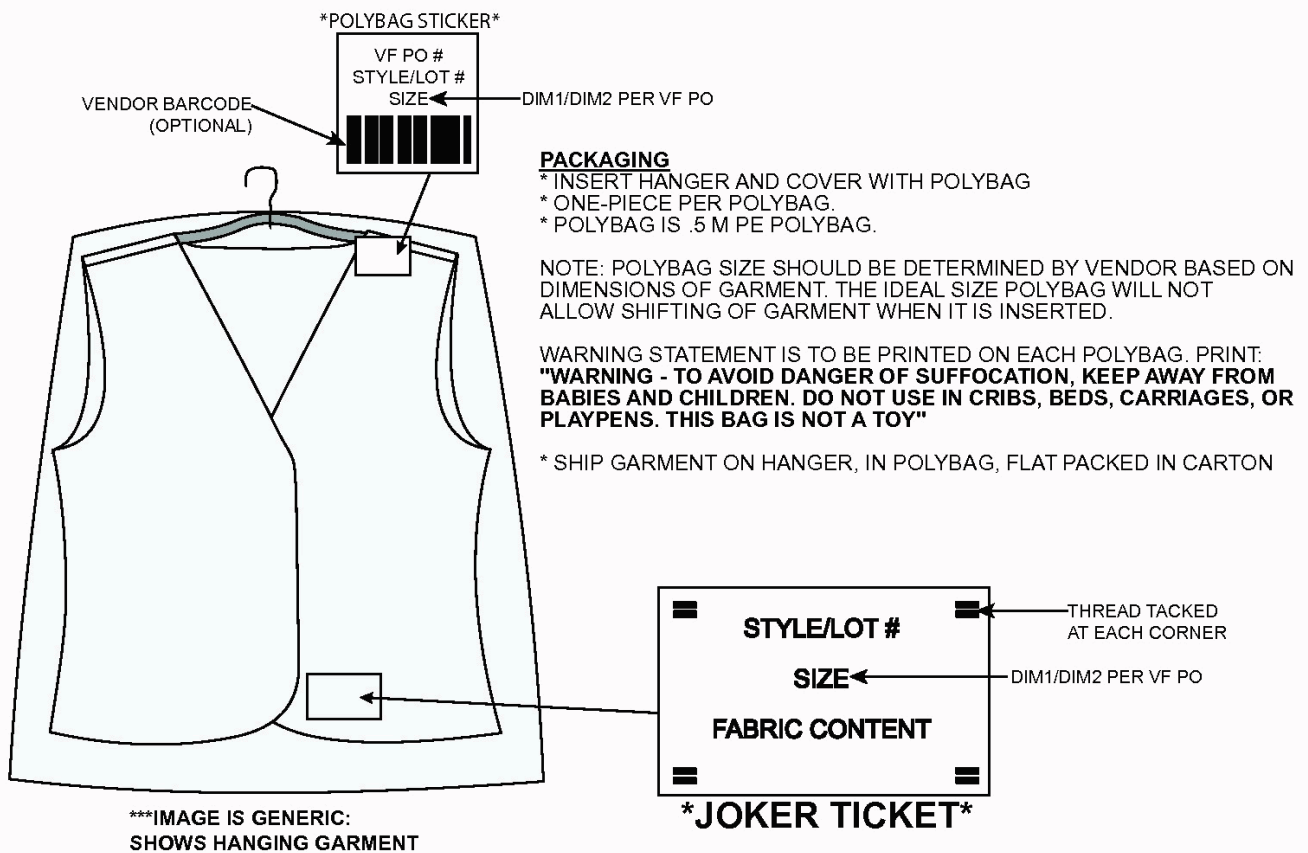
MR4255

Modified By: Walterl 08-23-2010 01:58 PM
Created By: StrideLdr 03-15-2008 03:41 AM



Page Name: Finishing and Packing Details

PG Modified By: Walterl 05-26-2009



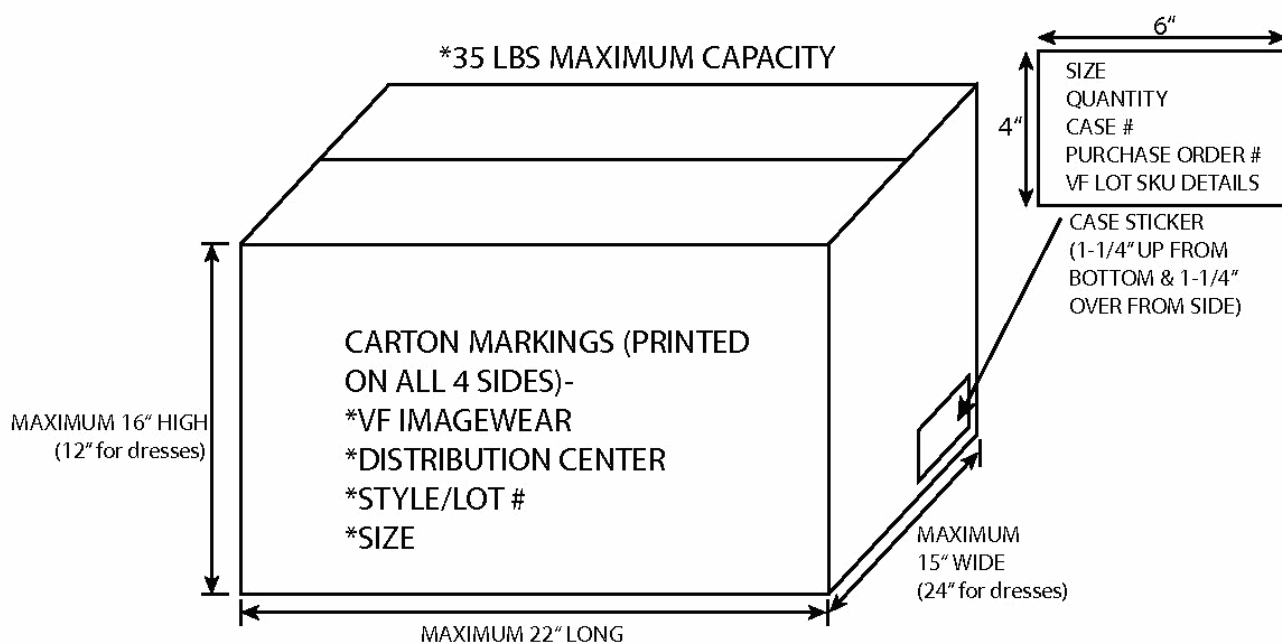
Name MR4155pack

Description HANG POLYBAG



SHIPPING INSTRUCTIONS-

- *ADVANCE SHIPPING NOTICE (ASN) MUST BE FAXED TO THE DISTRIBUTION CENTER RECEIVING DEPARTMENT. USE THE ASN FORM PROVIDED.
- *SHIP FIRST QUALITY ONLY. QUANTITY MUST BE THE EXACT AMOUNT/ORDER
- *PACK FLAT IN BOX, ONE SKU PER BOX
- *THERE SHOULD BE A PACKING LIST LISTING EACH CARTON NUMBER, VF LOT NUMBER, SIZE, & QUANTITY
- *THE PACKING LIST SHOULD BE ON THE FIRST OR THE LAST BOX
- *IF THE PACKING LIST IS PLACED INSIDE THE BOX THERE SHOULD BE A "PACKING LIST ENCLOSED" STICKER
- *THE BOX CONTENTS LABEL/CASE STICKER SHOULD BE PLACED ON THE END OF THE BOX
- *THE LABEL SHOULD HAVE THE PO#, VF LOT #, SIZE, AND QUANTITY
- *THE LABEL SHOULD ALSO CONTAIN THE CARTON # (FOR EXAMPLE: 5 OF 200)



Name CTNINFO

Description CTNINFO

American Airlines Vest

Image | Image | Production | 2005 | Annual
Finished Product

MR4255

Created By: StrideLdr 03-15-2008 03:41 AM
Modified By: Walterl 08-23-2010 01:58 PM



Page Name: COMPONENTS

PG Modified By: Walterl 05-26-2009

SEE "AMERICAN AIRLINES VENDOR BOM'S" ON THE VF SR FOR MORE DETAILS	
Component	Qty / Placement
55%/45% poly/wool- navy, fabric code 77070	shell fabric, front facings
100% polyester- navy	lining
Thread- DTM Body	
Interfacing	front facing
24L pewter wreath design shank button	4- center front
E1970 VF Imagewear woven brand label (see image)	center back
Care/content label	center back
Size tab	center back
Polybag	1 per garment
Polybag sticker	see image
Joker ticket	lower front
Hanger- black	1 per garment

Name 05-735cmpnts

Description vest

American Airlines Vest

Image | Image | Production | 2005 | Annual
Finished Product

MR4255

Created By: StrideLdr 03-15-2008 03:41 AM
Modified By: Walterl 08-23-2010 01:58 PM



PG Name: Label Details

PG Modified By:



Name E1970 VF Imagewear L **Description** E1970 VF Imagewear Label

American Airlines Vest

Image | Image | Production | 2005 | Annual
Finished Product

MR4255

Created By: StrideLdr 03-15-2008 03:41 AM
Modified By: Walterl 08-23-2010 01:58 PM



PG Name: Label Details

PG Modified By:

Printed Front

Style: XXXXX

MADE IN XXXXX

**CONTENT: ____% xxxxxxxx
____% XXXXXX**

SIZE: XXXXXX

FOR CARE SEE REVERSE

**VF IMAGEWEAR INC.
PO BOX 140995
NASHVILLE, TN 37214**

Printed Back for wool
garments, poly/wool
garments, poly tops,
& lined poly garments



**DRY CLEAN ONLY.
LAVAR EN SECO SOLAMENTE.**

**PO #
EXIT DATE**

Printed Back for
unlined poly bottoms



**MACHINE WASH COLD,
GENTLE CYCLE WITH
LIKE COLORS. NO
BLEACH. LINE DRY. COOL
IRON IF NECESSARY**

**LAVAR A MAQUINA EN AGUA
FRIA, CICLO DELICADO CON
COLORES SIMILARES.
HACER SECAR COLGADO.
PLANCHA TIBIA, SI ES
NECESARIO. NO USAR
BLANQUEADOR.**

**PO #
EXIT DATE**

*ALSO LIST LINING CONTENT IF APPLICABLE

EAM02

Name EAM02pcl

Description care/content label

American Airlines Vest

Image | Image | Production | 2005 | Annual
Finished Product

MR4255

Created By: StrideLdr 03-15-2008 03:41 AM
Modified By: Walterl 08-23-2010 01:58 PM



PG Name: PREFERRED RAW MATERIAL SUPPLIERS

PG Modified By:

Preferred suppliers of sewing thread:
American & Efird
Coats American

LIST OF PREFERRED SUPPLIERS

Name	PREFERRED RAW MATER	Description	PREFERRED RAW MATERIAL SUPPLIERS
-------------	---------------------	--------------------	----------------------------------

American Airlines Vest

Image | Image | Production | 2005 | Annual
Finished Product

MR4255

Created By: StrideLdr 03-15-2008 03:41:41

Modified By:



Page Type: Measurement Specification Page Name: VF-6508 051908 PGModified By: WILLIDO 12-29-2010 11:20 AM

Finished												
POM	Description Variation	XS	S	[M]	L	XL	XXL	3XL	4XL			
CWW04	Chest	34	36	38 1/2	41 1/2	45 1/2	49 1/2	53 1/2	57 1/2			
WWN01	Waist at narrowest point.	31 1/2	33 1/2	36	39	43	47	51	55			
HBW01	Sweep	36 1/2	38 1/2	41	44	48	52	56	60			
SWW03	Across Shoulder- TAILORED	12 5/8	13 3/8	14 1/8	15 3/8	16 5/8	17 7/8	19 1/8	20 3/8			
AOA01	Armhole Along Curve	20 1/4	21	21 7/8	22 7/8	24 1/8	25 3/8	26 5/8	27 7/8			
BRL05	Center Back Length - TAILORED PT	18 1/4	18 3/4	19 1/4	19 3/4	20 1/4	20 3/4	21 1/4	21 3/4			
BRL05	Center Back Length - TAILORED RG	19 1/4	19 3/4	20 1/4	20 3/4	21 1/4	21 3/4	22 1/4	22 3/4			
BRL05	Center Back Length - TAILORED TL	20 1/4	20 3/4	21 1/4	21 3/4	22 1/4	22 3/4	23 1/4	23 3/4			
UQ001	Wingpin Guide/ Eyelet Placemt (see image).	4 5/8	5 1/8	5 5/8	6 1/8	6 5/8	7 1/8	7 5/8	8 1/8			

Remarks :
SPEC DATE REPLACES SPEC DATE REASON FOR CHANGE
5-19-08 NEW NEW for DV05-735

4-14-08 3-14-08 Added size 4XL
3-14-08 2-12-08 Added eyelet placement
2-12-08 NEW NEW - REPLACES VF-6508 FOR DEVELOPMENT PROCESS

Page Comments:
BLAZER006

Horizontal Eyelet Placement is included in Tech Pack.

American Airlines Vest

Image | Image | Production | 2005 | Annual
Finished Product

MR4255

Created By: StrideLdr 03-15-2008 03:41:41

Modified By:

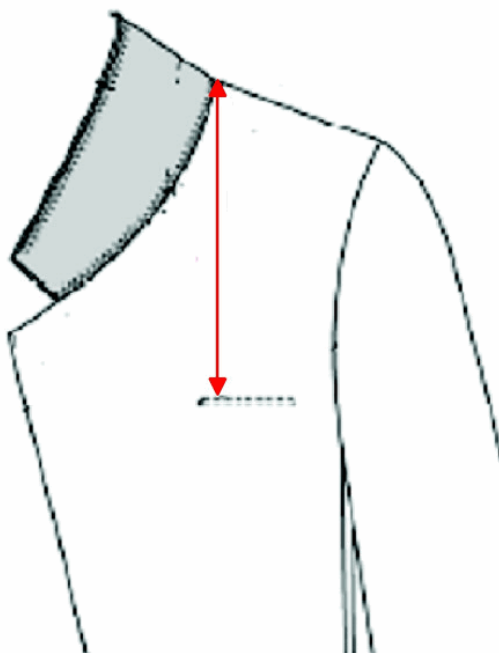


Page Type: Measurement Specification

Page Name: VF-6508 051908

PGModified By: WILLIDO 12-29-2010 11:20 AM

UQ001



**THIS IS NOT A 'HOW TO MEASURE CODE'.
THIS IS A GENERIC SKETCH.**



No.	Date	User Id	Change Log
1	1/3/2011 1:26:26PM	Walterl	per Donna/patterns- added meas spec page
2	8/23/2010 1:58:02PM	Walterl	per Cathy/patterns- added Smartsizing: LJ-0002
3	12/23/2009 11:16:44AM	BynumPD	Linked Preferred Raw Materials image which was previously unlinked
4	12/23/2009 11:10:17AM	BynumPD	Page Deleted - Preferred Raw Material Suppliers - Text Form
5	5/26/2009 2:08:14PM	Walterl	per Caroline's 5/21/09 SCA- components page: fabric code from 90511 to 77070, added "woven" brand label, added "black" hanger
6	5/26/2009 9:06:04AM	Walterl	per Caroline's 5/22/09 SCA- from tailored-garment shipping carton back to previous carton details (per MR4223)
7	4/22/2009 11:05:11AM	BynumPD	Added carton per Caroline Graham SCA 4/92009
8	7/30/2008 9:52:56AM	Walterl	per top sample audit- polybag sticker from cut # to PO #
9	5/22/2008 12:41:23PM	Walterl	per KO/patterns- pattern # from DV05-735 to VF-6508 (references dimensions on the VFSR)
10	4/1/2008 9:51:18AM	Walterl	rename from 05-735MR to MR4255/style set up complete
11	3/26/2008 2:09:56PM	Walterl	removed LUF placement per pattern template/size set sample audit
12	3/25/2008 3:32:12PM	Walterl	APPROVED FOR STYLE SET UP PER EMILY
13	3/25/2008 3:30:20PM	Walterl	Page Deleted - Vendor BOM - Text Form
14	3/11/2008 2:35:29PM	WALTERL	replaced vendor BOM per Connie 3/11/08
15	3/11/2008 7:32:01AM	WALTERL	added vendor BOM per Connie 1/31/08
16	2/12/2008 2:45:16PM	WALTERL	per Emily/Cathy- model/pattern from VF-6508 to DV05-735
17	12/28/2007 1:25:09PM	WALTERL	clarified care/content label (lining content & poly/wool care option)
18	11/19/2007 3:08:10PM	WALTERL	updated per size set sample audit- revised tech pack to match more current format of 07-1333 then: polybag sticker to upper right corner, care/content label to EAM02 (lists po/exit), add 90511 fabric code
19	7/2/2007 8:49:53AM	WALTERL	per weartest sample audit- added buttonhole measurement per calculations down from hole for 32L button to 24L button; brand label from ES402 to E1970
20	10/11/2005 12:33:27PM	MORRISL	add model to top page of tech pack to reference dimensions pattern number per Anthony (dimensions published seperately on VFSR)
21	9/12/2005 1:22:13PM	MORRISL	corrected LUF eyelet placement to be from center of top button (was from HPS)
22	8/8/2005 10:46:10AM	MORRISL	corrected lining dart depiction per 8/2/05 examination of samples
23	7/22/2005 10:22:21AM	MORRISL	Changed Style Id from "MR4155" to "05-735MR".
24	5/27/2005 9:06:51AM	MORRISL	corrected all images and verbage to match sample; tech pack approved and ready for VFSR 5/27/05
25	5/26/2005 10:32:37AM	MORRISL	added packing components to components page
26	5/20/2005 12:27:37PM	MORRISL	imported dimensions