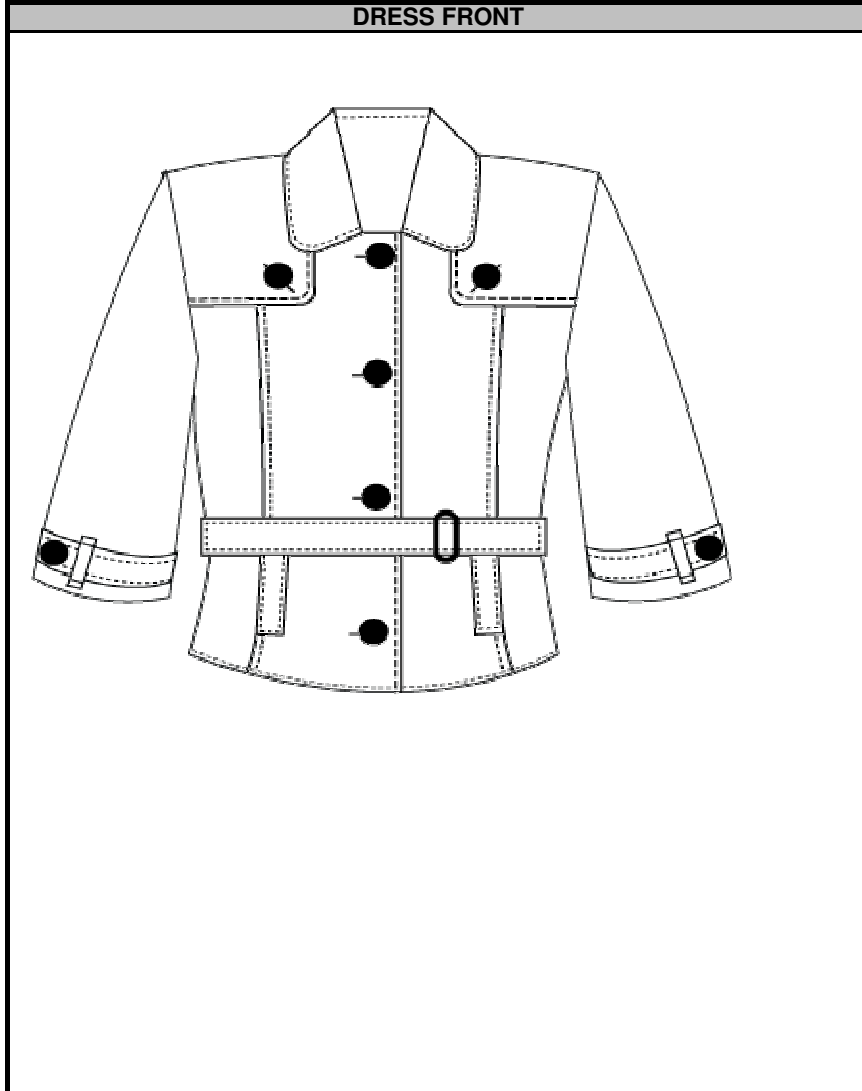


STYLE DESCRIPTION

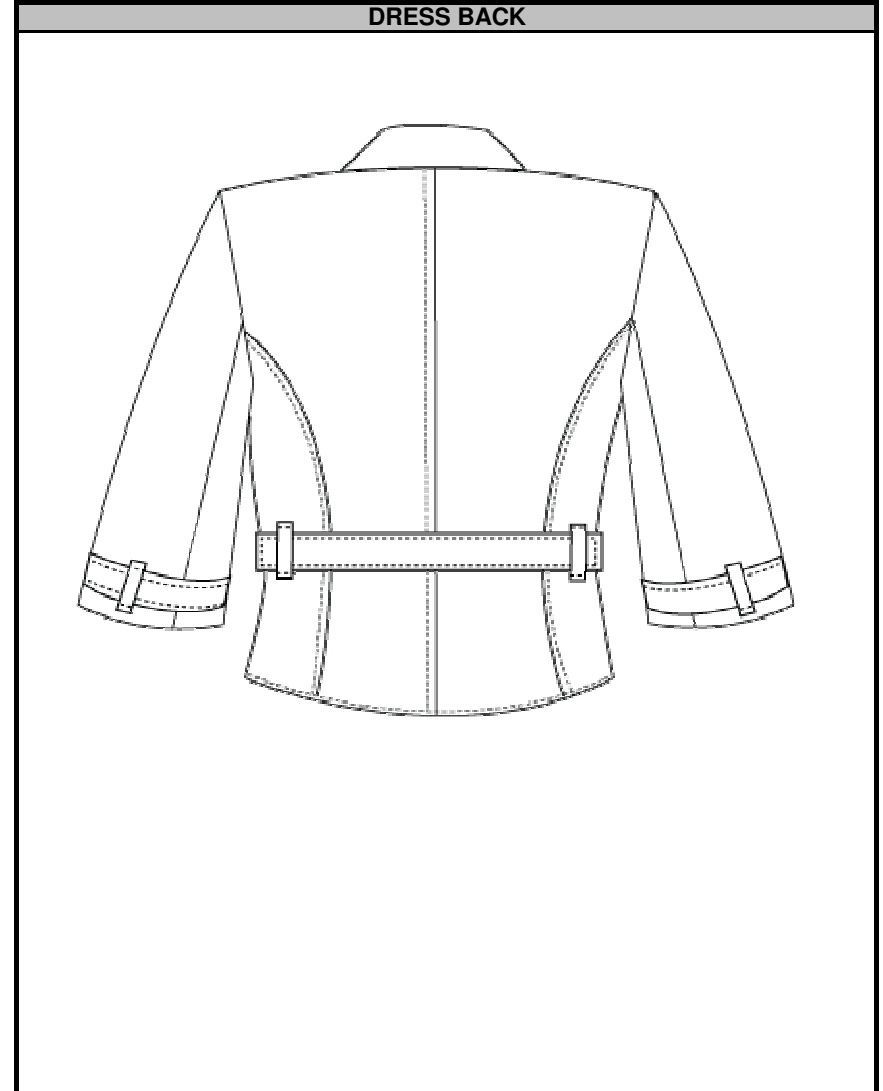
LOT #: MK652 MAT#17632 DESCRIPTION: Safari Jacket	DATE CREATED:1 DATE REVISED:	IN DC DATE: CUSTOMER:	MANUFACTURER: SIZE RANGE: PRODEV:	THUMBNAIL
---	---------------------------------	--------------------------	---	-----------

ADDITIONAL ATTRIBUTES: The Safari Jacket will be Based on Pattern # 3884. The Jacket will have 2 inside Double Welt Pocket (4 1/2 Width X 4 3/4" Height). The Pockets will be Placed 2" from the bottom of the Hem and 1" over from the edge of the lining. There will be a extra Loop on the sleeve to better support the cuff strap.

DRESS FRONT



DRESS BACK



BILL OF MATERIALS

LOT #: MK652	DATE CREATED: 1	IN DC DATE:	MANUFACTURER:	THUMBNAIL
MAT#: 17632	DATE REVISED:	CUSTOMER:	SIZE RANGE:	
DESCRIPTION: Safari Jacket			PRODEV:	

FABRIC DETAIL



FABRIC TYPE	CONTENT	CONSTRUCTION	WEIGHT PER SQ YD	FINISHING/ COATING	COLOR	RM#	FABRIC SUPPLIER
SHELL	100% Poly Red Jacquard fabric				Red	Q98-618	Texline
LINING	100% Polyester NEW Star pattern					Brioni: NEW Star pattern	LAFFETTE
POCKETING							

TRIM DETAIL

TRIM TYPE	DESCRIPTION	SIZE	COLOR	QTY	PLACEMENT	SUPPLIER	POST PICK (Y/N)
Self Fabric Tie Belt	100% Poly Red Jacquard fabric		Red	1	Around the Waist	TEXLINE	
THREAD	100% Polyester		DTM			YMA	
LARGE BUTTON	#BG0068 Black/Nick 48L	48L	Black/Nick	5	4 ON THE CENTER FRONT, 1 Extra	TIGER	
SMALL BUTTON	#BG0068 Black/Nick 40L	40L	Black/Nick	5	ONE ON EACH CUFF, ONE ON EACH FRONT FLAPS , 1 Extra	TIGER	

CONSTRUCTION DETAIL

LOT #: MK652	DATE CREATED:1	IN DC DATE:	MANUFACTURER:	THUMBNAIL
MAT#17632	DATE REVISED:	CUSTOMER:	SIZE RANGE:	
DESCRIPTION: Safari Jacket				

Inside Pocket Placement		Collar Detail	
	<p>The Jacket will have 2 inside Double Welt Pocket (4 1/2 Width X 4 3/4" Height). The Pockets will be Placed 2" from the bottom of the Hem and 1" over from the edge of the lining.</p>		

Cuff Detail		Back Detail	
			<p>Pleat Length should be 6.5</p>

ADDITIONAL FEATURES	
CUFF	
Sleeve	3/4 SLEEVE
FRONT AND BACK SEAMS	
COLLAR	cb Collar legnth is 4.25
INSIDE POCKET	2 inside Double Welt Pocket (4 1/2 Width X 4 3/4" Height). The Pockets will be Placed 2" from the bottom of the Hem and 1" over from the edge of the lining.
POCKET	ONE FAUX POCKET ALONG EACH FRONT SEAM
BACK YOKE	
BELT LOOPS	2 STRING LOOPS ON EACH SIDE SEAM
Self Fabric Belt	Belt should be 2" width

LABEL AND PACKAGING INFORMATION				
LOT #: MK652	DATE CREATED:1	IN DC DATE:	MANUFACTURER:	THUMBNAIL
MAT#17632	DATE REVISED:	CUSTOMER:	SIZE RANGE:	
DESCRIPTION: Safari Jacket			PRODEV:	

MAIN LABEL	PLACEMENT
	<p>Main Label placed at CB yoke</p>

CARE & CONTENT LABEL	PLACEMENT
	<p>Placed at the welt of the left inside lower Pocket</p>

SIZE LABEL	PLACEMENT
	<p>Main Label placed at CB yoke/ size Lable placed under Main Label</p>

Care/Content Placement	PLACEMENT
	<p>Placed at the welt of the left inside lower Pocket</p>

LABEL TEXT INFORMATION	
CARE/ CONTENT FRONT	Content, Size, DESIGNED IN THE USA. MADE IN , LOT# , RN # 73282, CARE ON REVERSE
CARE/ CONTENT BACK	Professional Dry clean only

PACKAGING INFORMATION: Bulk Pack

CARTON DIMENSIONS: 24.5" LONG x 15" WIDE x 9" TALL