

STYLE DESCRIPTION

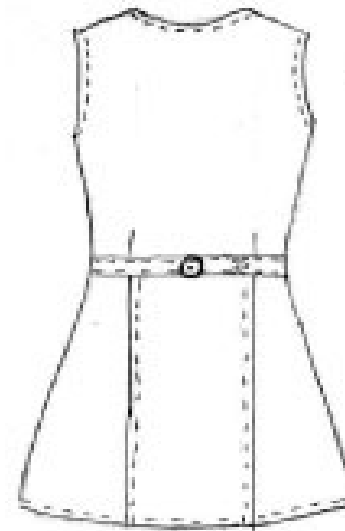
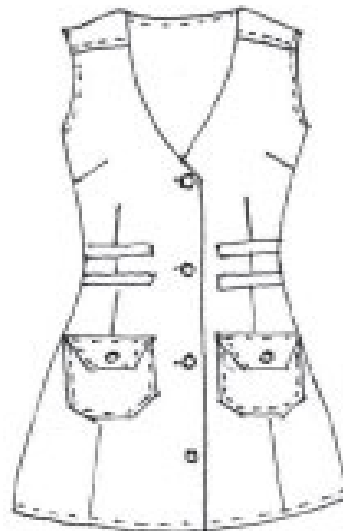
LOT #:	DATE CREATED: 5-18-11	IN DC DATE:	MANUFACTURER:
PATTERN#:	DATE REVISED:	CUSTOMER: Delta	SIZE RANGE:
DESCRIPTION: Female BE Serving Garment			PRODEV: Stephanie



ADDITIONAL ATTRIBUTES:

- Serving vest without lapels. Princess seams for tailored fit. Four welt pockets and two large patch pockets with flaps on the front to hold serving needs. Four button front closure.
- Back of the vest has adjustable tab and buckle to accommodate a wide range of sizes.
- Alpha Sizing.

ILLUSTRATION - 1



BILL OF MATERIALS

LOT #:	DATE CREATED: 5-18-11	IN DC DATE:	MANUFACTURER:	
PATTERN#:	DATE REVISED:	CUSTOMER: Delta	SIZE RANGE:	
DESCRIPTION: Female BE Serving Garment				PRODEV: Stephanie

FABRIC DETAIL

FABRIC TYPE	CONTENT	CONSTRUCTION	WEIGHT PER SQ YD	FINISHING/ COATING	COLOR	RM#	FABRIC SUPPLIER
SHELL	Novastretch (solid)	61 in- cuttable width *Fabric and construction need to be machine washable*	7,47 oz/sq yd	Lafgard	Navy (PMS 6)-064	2423	Lafayette
		Fabric and construction need to be machine washable			Navy (PMS 6)-064		Lafayette

EMBROIDERY DETAIL

EMBROIDERY PLACEMENT	DESCRIPTION	STITCH COUNT	THREAD COLORS	THREAD CONTENT	EMB LOT #	THREAD SUPPLIER	POST PICK (Y/N)
LEFT CHEST							
RIGHT CHEST							
OTHER							

TRIM DETAIL

TRIM TYPE	DESCRIPTION	SIZE	COLOR	QTY	PLACEMENT	SUPPLIER	POST PICK (Y/N)
THREAD	DTM		NAVY				
Button (Front Closure)	4 hole plastic	24 ligne	DTM Dk navy	4	Center Front Closure Evenly spaced apart		
Buckle (Adjustable Back Closure)	plastic		DTM Dk navy	1	Back of vest		
DESIGNER LABEL	Lion Logo Label-Woven with woven text	2" wide by 1" high	silver on black	1	Center back neck		
MAIN LABEL	Lion Logo Label-Woven with woven text	2" wide by 1" high	Black on white	1	Center back neck below the care/content label		
CARE/ CONTENT LABEL	Folded woven label	1" wide by 2" long	Black on white	1	Center back neck		
SIZE LABEL	Folded woven label		Black on white	1	inserted into the right side of main label		

MEASUREMENT SPEC			
LOT #:	DATE CREATED: 5-18IN DC DATE:	MANUFACTURER:	
PATTERN#:	DATE REVISED:	CUSTOMER: Delta	SIZE RANGE:
DESCRIPTION: Female BE Serving Garment			PRODEV: Stephanie



	xxs	xs	s	m	l	xl	2xl	3xl	4xl	5xl	6xl										
	00	0	2	4	6	8	10	12	14	16	18	20	18W	20W	22W	24W	26W	28W	30W	32W	+/- TOL
CHEST (1" BELOW AH)	32	33	34	35	36	37	38	39.5	41	42.5	44	45.5	47.75	50.25	52.75	55.25	57.75	60.25	62.75	65.25	3/4
WAIST (16" FROM HPS)	28	29	30	31	32	33	34	35.5	37	38.5	40	41.5	44.5	47	49.5	52	54.5	57	59.5	62	3/4
SWEEP	35	36	37	38	39	40	41	42.5	44	45.5	47	48.5	48.25	50.75	53.25	55.75	58.25	60.75	63.25	65.75	3/4
ARMHOLE (CURVED)	18 3/4	19 1/4	19 3/4	20 1/4	20 3/4	21 1/4	21 3/4	22 1/2	23 1/4	24	24 3/4	25 1/2	25	26	27	28	29	30	31	32	3/8
BACK LENGTH (CBN)	31 1/2	31 3/4	32	32 1/4	32 1/2	32 3/4	33	33 3/8	33 3/4	34 1/8	34 1/2	34 7/8	35 1/8	35 1/2	35 7/8	36 1/4	36 5/8	37	37 3/8	37 3/4	1/2
SHOULDER LENGTH	2 5/8	2 3/4	2 7/8	3	3 1/8	3 1/4	3 3/8	3 1/2	3 5/8	3 3/4	3 7/8	4	3 3/8	3 1/2	3 5/8	3 3/4	3 7/8	4	4 1/8	4 1/4	1/8
FRONT NECK DROP (CBN TO 1ST BTN)	7 1/4	7 1/4	7 1/4	7 1/2	7 1/2	7 1/2	7 1/2	7 1/2	7 1/2	7 1/2	7 1/2	7 1/2	8 3/4	8 3/4	9	9	9	9	9 1/4	9 1/4	1/4
NECK OPENING	6 3/4	6 3/4	6 3/4	7	7	7	7	7 1/4	7 1/4	7 1/4	7 1/4	7 1/4	7 7/8	7 7/8	8 1/8	8 1/8	8 3/8	8 3/8	8 5/8	8 5/8	1/4
BUTTON TO BUTTON	3	3	3	3 1/8	3 1/4	3 3/8	3 1/2	3 5/8	3 3/4	3 7/8	4	4 1/8	3 1/8	3 1/4	3 3/8	3 1/2	3 5/8	3 3/4	3 7/8	4	1/8

CONSTRUCTION DETAIL			
LOT #:	DATE CREATED: 5-18-11	IN DC DATE:	MANUFACTURER:
PATTERN#:	DATE REVISED:	CUSTOMER: Delta	SIZE RANGE:
DESCRIPTION: Female BE Serving Garment			PRODEV: Stephanie



ILLUSTRATION - 1	DESCRIPTION - 1

ILLUSTRATION - 2	DESCRIPTION - 2

ILLUSTRATION - 3	DESCRIPTION - 3

ILLUSTRATION - 4	DESCRIPTION - 4

ADDITIONAL FEATURES	
BODY	4 panel construction with princess darts to the hem (front and back) and chest darts from the side seam

Buckle adjustable DTM buckle at waist in back

Pockets

4 waist level single welt pockets (left and right). Welt measures 1"high x 4 1/2" wide. Pocket depth should be 5".
2 hip level patch pockets (left and right). Patch pocket measures 6-1/2" high x 5-1/2" wide. Mitered bottom corners. Pocket flap in non functional.
Pocket will have top entry ONLY.

LABEL AND PACKAGING INFORMATION			
LOT #:	DATE CREATED: 5-18-11	IN DC DATE:	MANUFACTURER:
PATTERN#:	DATE REVISED:	CUSTOMER: Delta	SIZE RANGE:
DESCRIPTION: Female BE Serving Garment			PRODEV: Stephanie



MAIN LABEL	PLACEMENT
*I will need to provide you with label samples for standard.	

CARE & CONTENT LABEL	PLACEMENT

SIZE LABEL	PLACEMENT

OTHER	PLACEMENT

LABEL TEXT INFORMATION	
DESIGNER LABEL	Lion Logo Label-Woven with woven text
CARE/ CONTENT FRONT	Care/content label should read as follows: Lion logo, "Made in China", "LOT: DALXXX, "80% Acrylic, 20% Wool", SIZE: X, "WPL# 13341"
CARE/ CONTENT BACK	Wash care instructions.

PACKAGING INFORMATION: fold and individual polybag pack. For regular sizes, we will just fold at the waist line before putting into the box. For large sizes, we will fold the side seam first and then fold at the waist line. In box 24 1/2" x 15" x 9" PLEASE PUT A PIECE OF HEAVY TISSUE PAPER INSIDE FOLD TO ELIMINATE THE BUTTON IMPRESSION.

CARTON DIMENSIONS: 24.5" LONG x 15" WIDE x VARIABLE HEIGHT

