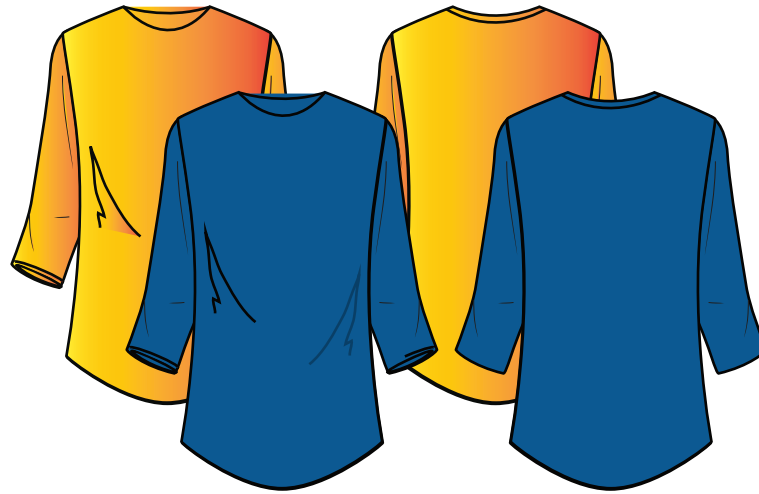


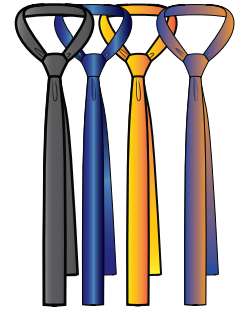


WOMEN'S STYLE # TH-16

MODIFIED TUXEDO JACKET WITH STRUCTURED SHAWL STYLE COLLAR, SINGLE FRONT BUTTON, TWO SIDE SEAM POCKETS, SINGLE BREAST POCKET. LIGHT-WEIGHT FABRIC, EASY TO ROLL SLEEVES WITH CONTRASTING LINING.



WOMEN'S STYLE # TH-12
BASIC 3/4 SLEEVE SHIRT



WOMEN'S STYLE # TH-41
PRE-TIED NECKTIE WITH HOOK & EYE CLOSURE AT BACK NECK



WOMEN'S STYLE # TH-07

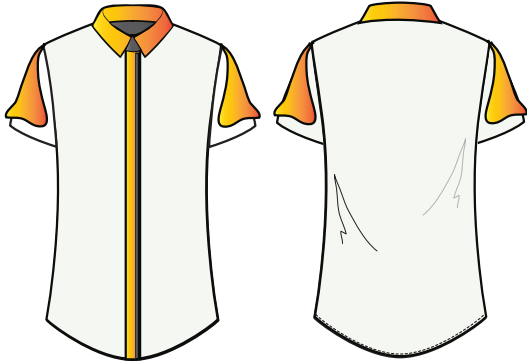
3/4 SLEEVE SHIFT DRESS WITH FABRIC OVERLAY JOINED AT SHOULDER SEAMS, CONCEALED FRONT HIP POCKETS.



WOMEN'S STYLE # TH-03
BASIC FLAT FRONT PANT WITH POCKETS

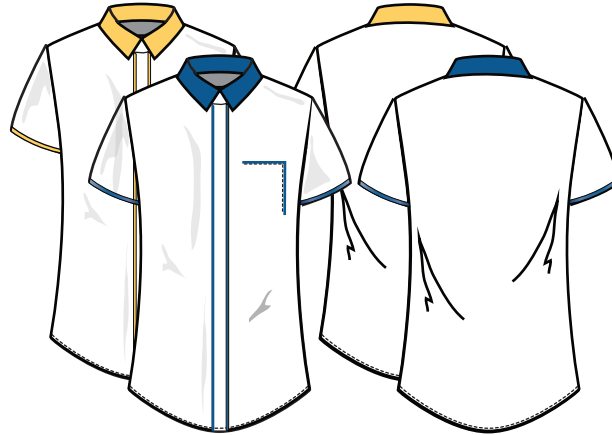


WOMEN'S STYLE # TH-43
CLASSIC TRENCH, LONG SLEEVES, OPTIONAL BELT, SHOULDER EPAULETTES



WOMEN'S STYLE # TH-11

SHORT SLEEVE BLOUSE WITH CONCEALED PLACKET, FABRIC OVERLAY ON SLEEVES.



WOMEN'S STYLE # TH-33 SHORT SLEEVE

BLOUSE WH SEMI-CONCEALED SEAM BREAST POCKET, CONCEALED PLACKET, LONG SLEEVES. CONTRASTING TRIM/COLOR ON EDGE OF PLACKET, COLLAR STAND.



WOMEN'S STYLE # TH-02 LONG SLEEVE

BLOUSE WH SEMI-CONCEALED SEAM BREAST POCKET, CONCEALED PLACKET, LONG SLEEVES. CONTRASTING TRIM/COLOR ON EDGE OF PLACKET, COLLAR STAND, CUFFS.



WOMEN'S STYLE # TH-45

VEST WITH MOCK LAPELS, SINGLE FRONT BUTTON, TWO FRONT WELT POCKETS.



WOMEN'S STYLE # TH-15

NATURAL RISE PANT, RELAXED FIT, TWO POCKETS, MOCK TIE WAISTBAND



WOMEN'S STYLE # TH-31

SHORT SLEEVE DRESS WITH CUFF DETAILS AT NECKLINE AND SLEEVES.



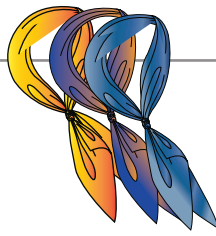
WOMEN'S STYLE # TH-44

4 POCKET JACKET, LIGHT-WEIGHT, LOOSE FIT



WOMEN'S STYLE # TH-40

PRE-TIED BOWTIE WITH HOOK & EYE CLOSURE AT BACK NECK



WOMEN'S STYLE # TH-42
NECK SCARF



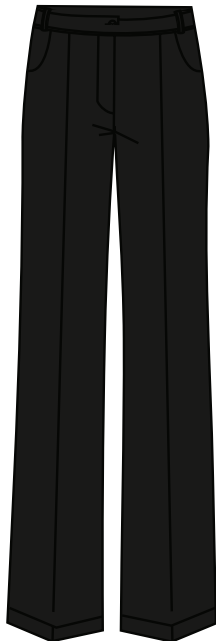
WOMEN'S STYLE # TH-02 LONG SLEEVE
BLOUSE WH SEMI-CONCEALED SEAM BREAST
POCKET, CONCEALED PLACKET, LONG SLEEVES.
CONTRASTING TRIM/COLOR ON EDGE OF PLACKET,
COLLAR STAND, CUFFS.



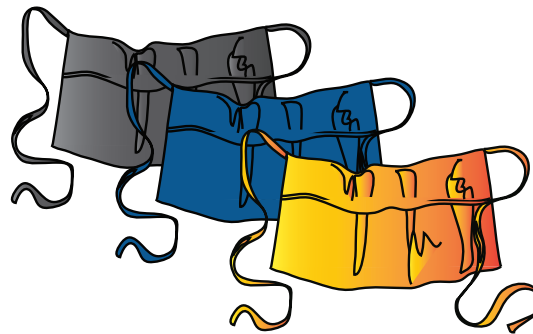
WOMEN'S STYLE #TH-10
TRENCH CAPE WITH CONCEALED FRONT ZIPPER,
TWO FRONT POCKETS, LOOSE & LIGHT-WEIGHT FIT,
SHORTENED BATWING STYLE SLEEVES.



WOMEN'S STYLE #TH-01
COLLARLESS JACKET WITH SINGLE
FRONT BUTTON, BREAST POCKET,
TWO FRONT WELT POCKETS



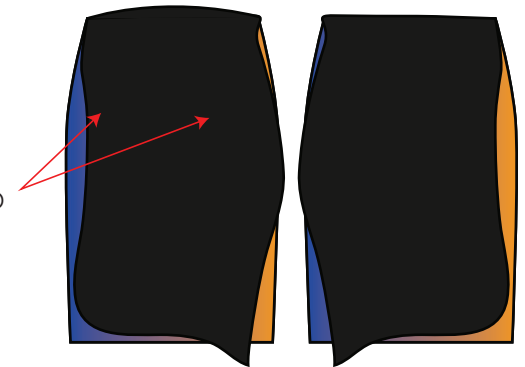
WOMEN'S STYLE # TH-06
CLASIC TROUSER WITH POCKETS,
STRONG CREASE DETAIL



WOMEN'S/MEN'S STYLE # TH-14
HALF APRON WITH LARGE STORAGE
POCKET, EXTRA LONG WAIST TIES FOR
MULTIPLE SIZE OPTIONS AND STYLING.

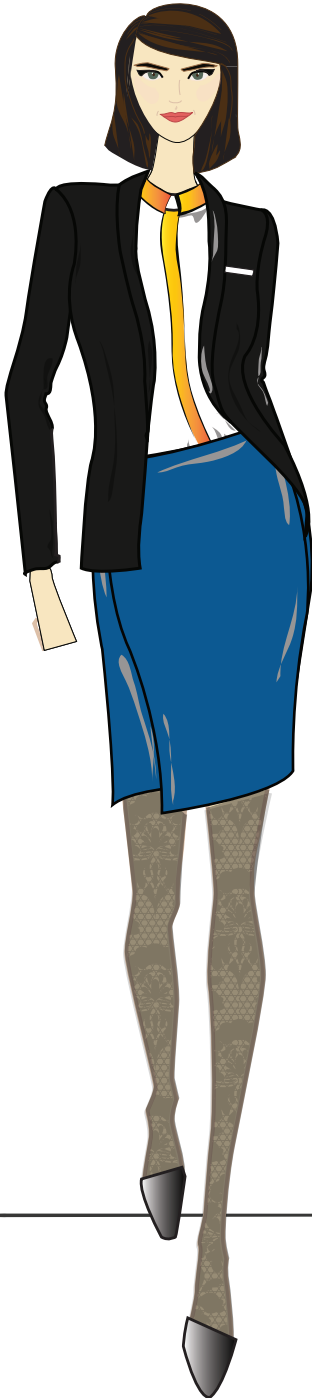


WOMEN'S STYLE # TH -46
DIGITAL PRINT FAUX
CABLE KNIT CARDIGAN



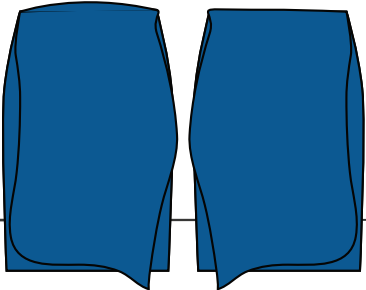
WOMEN'S STYLE # TH-08
PENCIL SKIRT WITH FABRIC OVERLAY
ATTACHED AT FRONT & BACK WAIST,
TWO CONCEALED FRONT POCKETS.

CONCEALED
POCKETS

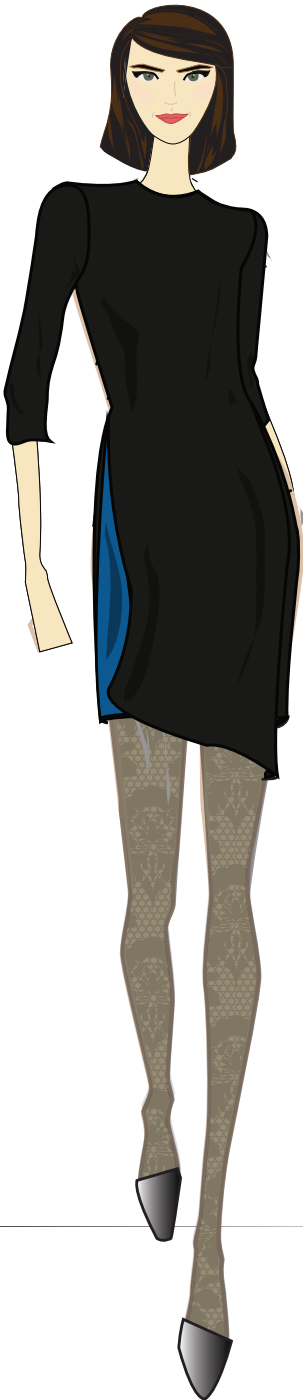


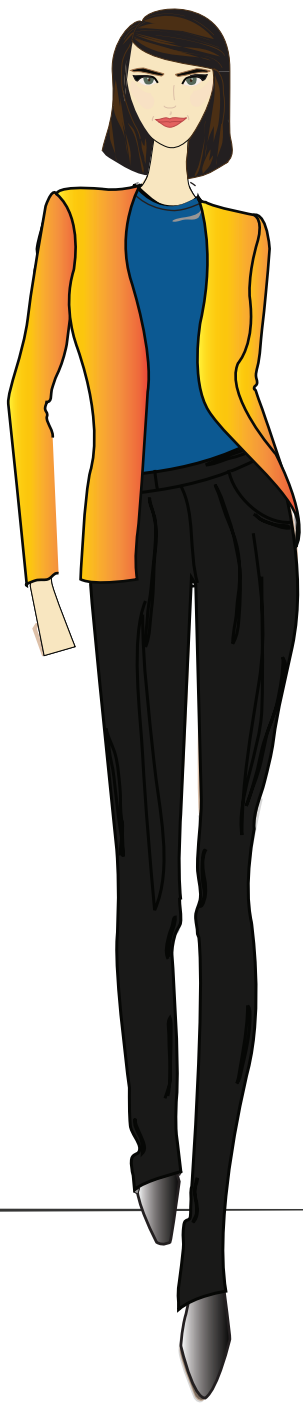
WOMEN'S STYLE # TH-16

WOMEN'S STYLE # TH-02 LONG SLEEVE

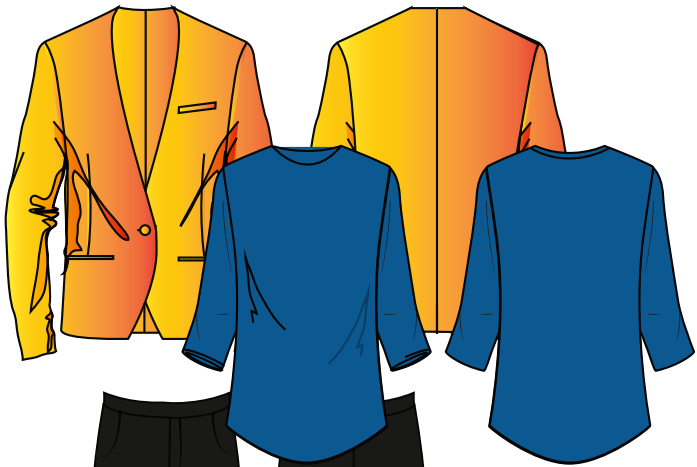


WOMEN'S STYLE # TH-08





WOMEN'S STYLE #TH-01



WOMEN'S STYLE # TH-12

WOMEN'S STYLE # TH-03





MEN'S STYLE # TH-26 LONG SLEEVE
SHIRT WH SEMI-CONCEALED SEAM BREAST
POCKET, CONCEALED PLACKET, LONG SLEEVES.
CONTRASTING TRIM/COLOR ON EDGE OF PLACKET,
COLLAR STAND, CUFFS.



MEN'S STYLE # TH-17
COLLARLESS JACKET WITH SINGLE FRONT
BUTTON, BREAST POCKET, TWO FRONT WELT
POCKETS.



MEN'S STYLE # TH-37 SHORT SLEEVE
BASIC SHIRT WITH SEMI-CONCEALED SEAM BREAST
POCKET, CONCEALED PLACKET, SHORT SLEEVES
CONTRASTING TRIM/COLOR ON EDGE OF PLACKET,
COLLAR STAND.



MEN'S STYLE # TH-20
FLAT FRONT PANTS WITH
CONTRASTING TRIM AT POCKETS



MEN'S STYLE # TH-29
DIGITAL PRINT FAUX CABLE KNIT
CARDIGAN



MEN'S STYLE # TH-18 LONG SLEEVE
CLASSIC PLAIN FRONT SHIRT, CONCLEAED
PLACKET, LONG SLEEVES, CONTRASTING TRIM/COLOR
ON EDGE OF PLACKET, COLLAR STAND, CUFFS



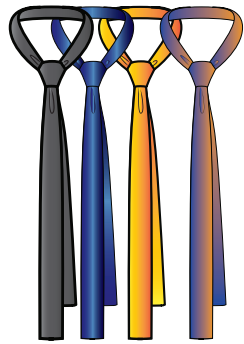
MEN'S STYLE # TH-21
MODIFIED TUXEDO JACKET WITH STRUCTURED
SHAWL STYLE COLLAR, SINGLE FRONT BUTTON,
TWO SIDE SEAM POCKETS, SINGLE BREAST POCKET.
LIGHT-WEIGHT FEEL, EASY TO ROLL SLEEVES WITH
CONTRASTING LINING.



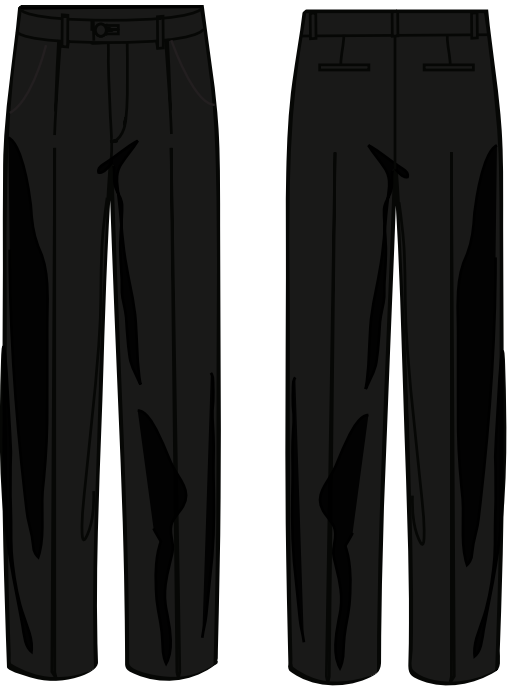
MEN'S STYLE # TH-28
VEST WITH MOCK LAPELS, SINGLE
FRONT BUTTON, TWO FRONT
WELT POCKETS.



MEN'S STYLE # TH-25
4 POCKET JACKET, LIGHT-WEIGHT,
LOOSE FIT



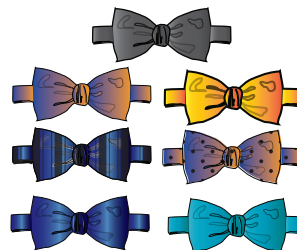
MEN'S STYLE # TH-39
NECK TIE



MEN'S STYLE # TH-23
PLEATED FRONT PANT WITH POCKETS



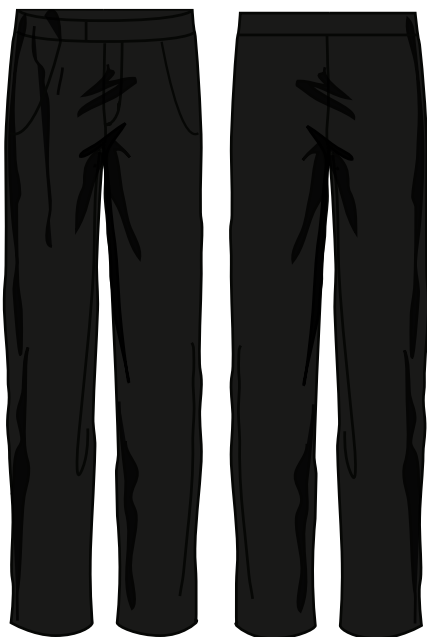
MEN'S STYLE # TH-18 LONG SLEEVE
CLASSIC PLAIN FRONT SHIRT, CONCEALED
PLACKET, LONG SLEEVES, CONTRASTING TRIM/COLOR
ON EDGE OF PLACKET, COLLAR STAND, CUFFS



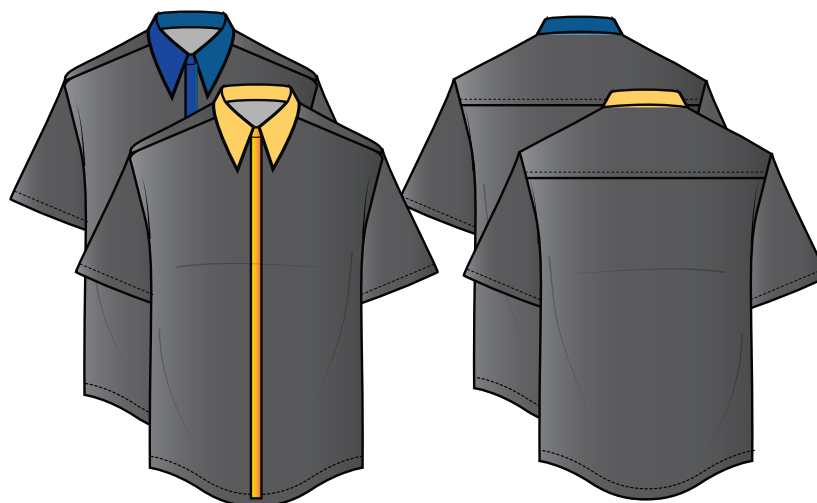
MEN'S STYLE # TH-38
PRE-TIED BOWTIE WITH HOOK & EYE
CLOSURE AT BACK NECK



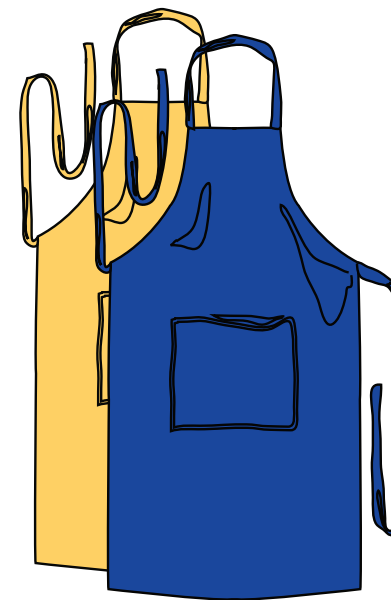
MEN'S STYLE # TH-24
CLASSIC LONG TRENCH COAT WITH SHOULDER
EPAULETTES, OPTIONAL BELTED WAIST,
TWO FRONT POCKETS.



MEN'S STYLE # TH-27
FLAT FRONT PANTS WITH
FRENCH FLY AND POCKETS



MEN'S STYLE # TH-36 SHORT SLEEVE
CLASSIC PLAIN FRONT SHIRT, CONCEALED
PLACKET, SHORT SLEEVES, CONTRASTING TRIM/COLOR
ON EDGE OF PLACKET, COLLAR STAND, CUFFS



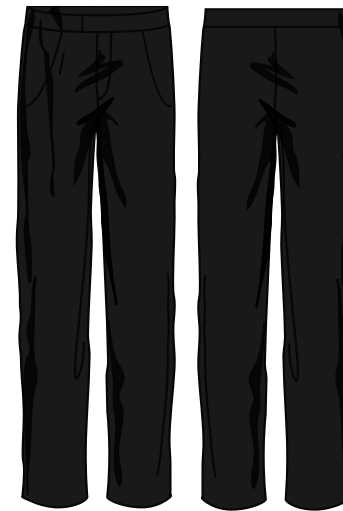
WOMEN'S/MEN'S STYLE # TH-22
FULL APRON WITH LARGE FRONT
STORAGE POCKET, EXTRA LONG WAIST TIES
FOR MULTIPLE SIZES AND STYLING OPTIONS.



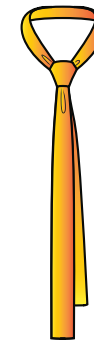
MEN'S STYLE # TH-17



MEN'S STYLE # TH-18 LONG SLEEVE



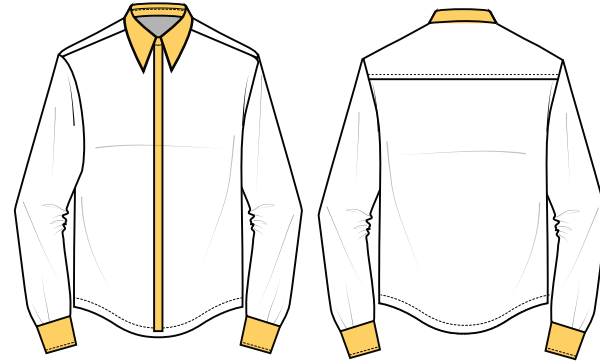
MEN'S STYLE # TH-27



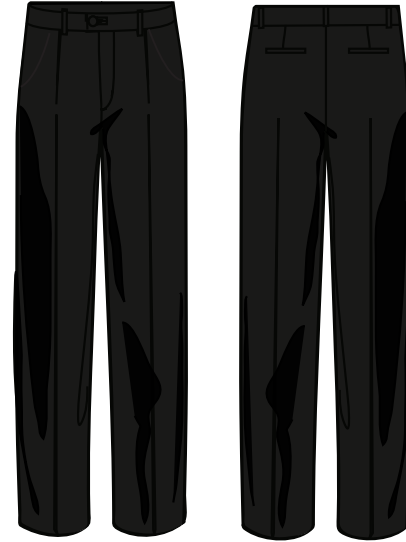
MEN'S STYLE # TH-39
NECK TIE



MEN'S STYLE # TH-18 LONG SLEEVE



MEN'S STYLE # TH-38



MEN'S STYLE # TH-23