

112964

MERCER BLAZER

Production

Mercer Blazer M

GA&SM-Catalog

GA&SM Style Folders

Fabric Content

53Recycled
Polyester/42Wool/5Lycra

Approved

HL 1-30-2007

Gender

Male

Fabric Code

WOVEN

Size Range

34-60

Product Line

Success Apparel - SUCC

Model #

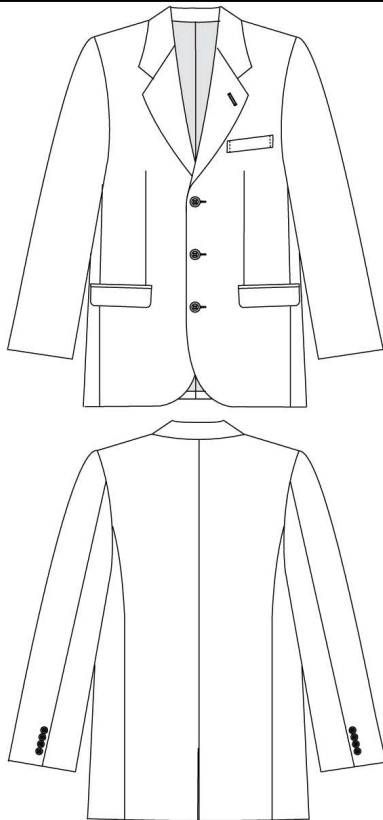
112964

Project #

Catalog Product



Grommets	None	Design Sample Due Date		Job Function	Tailored
Grommets Plcmnt		Costing Due Date		Monogram	None
Customization	None	Presentation Due Date			
Customization Plcmnt		Date Submitted			
Badge Tab	None	Designer	Michelle Dortch		
Badge Tab Plcmnt		Design Assistant	N/A		
Badge Loop	None	Technical Designer	Han Loc		
Badge Loop Plcmnt		Tech Design Assistant			
Garment Care	BagirCare2MWCG or DC	Program Manager	N/A		
Packaging Instructions	Hanging	Sales Rep	N/A	DMM	Donna Knechtel



STYLING FEATURES:

- * Fully Lined
- * Single Breast Welt Upper Left Chest
- * Notch Lapel
- * Three Button Closure
- * Waist Dart
- * Two Lower Besom with Flap Pocket
Coin Pocket on right side only
- * Long Sleeve
- * Sleeve with Vent & Four Buttons
- * Back Center Vent
- * Two upper Inner Besom Pocket
- * One lower left Inner Besom Pocket

PACKAGING:


- *Hanger with Hanging Polybag
- *Shipped in Hanging Container

112964

MERCER BLAZER

Production

Revision History

GA&SM-Catalog	GA&SM Style Folders	Fabric Content	53Recycled Polyester/42Wool/5Lycra	
Neither approved nor rejected	Page was edited.			
Gender	Male	Fabric Code	WOVEN	
Size Range	34-60	Product Line	Success Apparel - SUCC	
Model #	112964	Project #	Catalog Product	

[1] -- Revision - Revision

7-21-11 Updated content to 43rp/42w/5l, deleted aerocool hg tg, per vendor/DK. Rolling change on care instruction has now been posted. per vendor/DK KG

[2] - -

4-12-2010 Added size 56L, 58R, 58L, 60R, 60L.

CD User Defined 1: per KH

CD User Defined 2: KG

[3] -- Revision -

1/27-2010 Updated the Eco Hang Tag to the global 54%Recycled Eco Hang Tag. Rolling change.

CD User Defined 1: per vendor/DK

CD User Defined 2: KG

[4] -- Revision - Revision - Revision Description:

12-21-09 Added flexivent to elbow area starting in 12/09.

CD User Defined 1: per vendor/DK

CD User Defined 2: KG

[5] -- Revision - Revision - Revision Description:

12-21-09 Replaced care instructions: Care1Bagir MWWG or DC with new updated care instructions: Care2Bagir MWCG or DC, per Bagir Eco care. Added Eco Hang Tag for Cintas by Bagir.

CD User Defined 1: per vendor/DS

CD User Defined 2: KG

[6] -- Revision - Revision - Revision Description:

9-1-09 Added Sewing Recommendations and updated care instructions to add "Warm" to Steam Iron if Needed.

CD User Defined 1: per DS/SO/TR

CD User Defined 2: KG

[7] -- Revision - Revision - Revision Description:

12-3-08 Added full Fiber content to notes on frt page. Format does not allow to show in its entirety. I have noted full content on com page as well. No abbreviations.

CD User Defined 1: per DS

[8] -- Revision - Revision - Revision Description:

11-10-08 Changed content from 55rp42w3L to 54RP/42W/4Spandex

CD User Defined 1: per KH

CD User Defined 2: KG

[9] -- Revision - Revision - Revision Description:

7-31-08 Added D&A labels & placements, comp pgs per vendor request,.

CD User Defined 1: per DK/KS

CD User Defined 2: KG

[10] -- Revision - Revision - Revision Description:

7-9-08 Added colorway charcoal 33 to TP

CD User Defined 1: per DK/KH

CD User Defined 2: KG

[11] -- Revision - Revision - Revision Description:

7-9-08 Removed laundry label from Diagram page. (Clean up revision)

CD User Defined 1: per DK

CD User Defined 2: KG

112964		MERCER BLAZER		Production
Sewing Recommendations				
GA&SM-Catalog	GA&SM Style Folders	Fabric Content	53Recycled Polyester/42Wool/5Lycra	
Neither approved nor rejected				
Gender	Male	Fabric Code	WOVEN	
Size Range	34-60	Product Line	Success Apparel - SUCC	
Model #	112964	Project #	Catalog Product	

Vests/Jackets - General Sewing/Machinery/Thread/Needle Recommendations:

- Recommend factories to switch to ISO 401 on sideseam.
- Begin using Tex 24 or Tex 30 Perma Core (Poly Wrap Poly Core) for all needle positions on stress seams.
- Blindstitch operators should overlap their start/stop points on the inseam by at least 3/4" of an inch.
- Operators should be aware not to turn the handwheel on the machines backwards as they get ready to trim the thread as this will leave the thread in an " Unlocked Position".
- Recommend lockstitch buttonsew using ISO 304 only. (Buttonsew was primarily set with an ISO 101 single thread chainstitch, using spun poly).
- Recommend Tex 24 or Tex 30 Perma Core (Poly Wrap Poly Core) for both needle and bobbin on the buttonsew. This will help to avoid button failure due to abrasion of the rough button edges cutting the thread as the Perma Core has a much better abrasion resistance.
- If you experience button failure after switching to Perma Core the next step is to use a Tex 30 or 45 Anafil Nylon.

112964		MERCER BLAZER		Production
		Component Image		
GA&SM-Catalog	GA&SM Style Folders	Fabric Content		53Recycled Polyester/42Wool/5Lycra
Neither approved nor rejected				
Gender	Male	Fabric Code		WOVEN
Size Range	34-60	Product Line		Success Apparel - SUCC
Model #	112964	Project #		Catalog Product



Elbow Flex

112964	MERCER BLAZER		Production
	Components 20,35,33		
GA&SM-Catalog	GA&SM Style Folders	Fabric Content	53Recycled Polyester/42Wool/5Lycra
Neither approved nor rejected			
Gender	Male	Fabric Code	WOVEN
Size Range	34-60	Product Line	Success Apparel - SUCC
Model #	112964	Project #	Catalog Product

COMPONENT INFORMATION FOR FULL PACKAGE / FULL PACKAGE MANAGED TECHNICAL PACKAGES

Mercer Blz (M) 112964				
Main Fabric	AA - Charcoal	AA - Navy	AA - Black	AD
Raw Material Vendor Name:	N/A	N/A	N/A	Not applicable
Raw Material Ref. #	N/A	N/A	N/A	
Raw Material Description:				
Raw Material Vendor Style #:				
Raw Material Content:	53%Recycled Polyester/42%Wool/5%Lycra	53%Recycled Polyester/42%Wool/5%Lycra	53%Recycled Polyester/42%Wool/5%Lycra	
Color Number / Name:				
Raw Material Vendor Color #:				
Weight/Construction:				
Yarn Size:				
Cutable Width:				
Special Finish:				
Directional Design:				
Country Of Origin:				
Lining / Pocketing	BA - Lining	BB - Sleeve Lining - (All Colors)	BC - Pocketing	BD - Mesh
Raw Material Vendor Name:	Acker & Jablow	Acker & Jablow		
Raw Material Ref. #	N/A	N/A		
Raw Material Description:	Taffeta Lining	Taffeta Lining	Pocketing	Breathable Mesh
Raw Material Vendor Style #:	Spring Haze	Spring Haze	N/A	NA
Raw Material Content:	100 Polyester	100 Polyester		NA
Color Number / Name:	Coordinate w/fabric	purple stripe	Coordinate w/fabric	Coordinate w/fabric
Raw Material Vendor Color #:	Black	purple stripe		
Weight/Construction:	95 GR/YD/100 X 85	95 GR/YD/100 X 85		
Yarn Size:	75D X 75D	75D X 75D		
Cutable Width:	58"	58"		
Special Finish:	DYED	DYED		
Directional Design:	N/A	N/A		
Country Of Origin:	Korea	Korea		
Placement:	body except sleeves	Sleeves	pkt bags	Around shoulder area, elbow
Interining / Fusible	CA	CB	CC	CD
Raw Material Vendor Name:				
Raw Material Ref. #				
Raw Material Description:	Woven Fusible	Hair Canvas	Chest Felt	Under Collar Felt
Raw Material Vendor Style #:				
Raw Material Content:	100% Polyester			
Color Number / Name:	Black	Gray	White	Coordinator with Fabric
Raw Material Vendor Color #:				
Weight/Construction:	N/A	N/A	N/A	
Yarn Size:	N/A	N/A	N/A	
Cutable Width:	N/A	N/A	N/A	
Special Finish:	N/A	N/A	N/A	
Directional Design:	N/A	N/A	N/A	
Country Of Origin:	N/A	N/A	N/A	

53Recycled Polyester/42Wool/5Lycra

WOVEN

Success Apparel - SUCC

Catalog Product

Mercer Blz (M) 112964

Binding (all colors)

Acker & Jablow

Contrast 1/8" Flat Bias binding

	9
	Taupe

1/8" Finished wide

9

between body and facing

Seam Tape

QST

Seam tape

Black

3/16" wide

1.8

Front shoulder, armhole (front curve is optional)

Quantity:

112964

MERCER BLAZER
Construction Diagrams

Production

GA&SM-Catalog

Neither approved nor rejected

Gender

Size Range

Model #

GA&SM Style Folders**Male****34-60****112964**

Fabric Content

Fabric Code

Product Line

Project #

**53Recycled
Polyester/42Wool/5Lycra****WOVEN****Success Apparel - SUCC****Catalog Product**

112964

MERCER BLAZER
Construction Diagrams

Production

GA&SM-Catalog

Neither approved nor rejected

Gender

Size Range

Model #

GA&SM Style Folders**Male****34-60****112964**

Fabric Content

Fabric Code

Product Line

Project #

**53Recycled
Polyester/42Wool/5Lycra****WOVEN****Success Apparel - SUCC****Catalog Product**

112964

MERCER BLAZER
Care2-Bagir(MWCG or DC)

Production

GA&SM-Catalog

Neither approved nor rejected

Gender

Size Range

Model #

GA&SM Style Folders

Male

34-60

112964

Fabric Content

Fabric Code

Product Line

Project #

53Recycled

Polyester/42Wool/5Lycra

WOVEN

Success Apparel - SUCC

Catalog Product



CONTENT/CARE/SIZE LABEL

REVERSE SIDE

The following information must be listed on the reverse side of Care/Content/Size Label:

* Care Instructions

Bagir Care 2MWCG or DC

Fold Line

Fold Line

For Best Results,
Machine Wash Cold,
Gentle Cycle, No Spin Cycle,
With Like Garments,
Do Not Bleach,
Do Not Use Fabric Softeners,
Remove Promptly From Washer,
Tumble Dry Low Heat,
Cool Iron If needed,
OR
Professionally Dry Clean,
Do Not Use Trichlorethylene,
Reduce Moisture, Short Cycle,
No Steam Finishing, Low Heat.

Stitch Line

Stitch Line

CONTENT/CARE LABEL

FACE SIDE

(MUST BE USED IN COMBINATION WITH SIZE TAB LABEL)

The following information must be listed on the face side of Content/Care Label:

* PO #

* Fabric Content (%) fully spelled out (Do Not Abbreviate!)

* Style # - Color Code

* Cintas RN # 51374

* "Care On Reverse"

CCL1-D&A-NL

Stitch Line

Stitch Line

1 3/16"

LABEL SIZE:

Width = min 1 1/4"

Length = OK to adjust based on
information needed

PO #.....

62% COTTON
38% POLYESTER
STYLE 112829- 20
RN 51374
CARE ON REVERSE

Fold Line

Fold Line

1 1/4"

112964

MERCER BLAZER

D & A Labels Placement

Production

GA&SM-Catalog

Neither approved nor rejected

Gender

Size Range

Model #

GA&SM Style Folders

Page was edited.

Male

34-60

112964

Fabric Content

Fabric Code

Product Line

Project #

53Recycled

Polyester/42Wool/5Lycra

WOVEN

Success Apparel - SUCC

Catalog Product



EF - DAP - 2



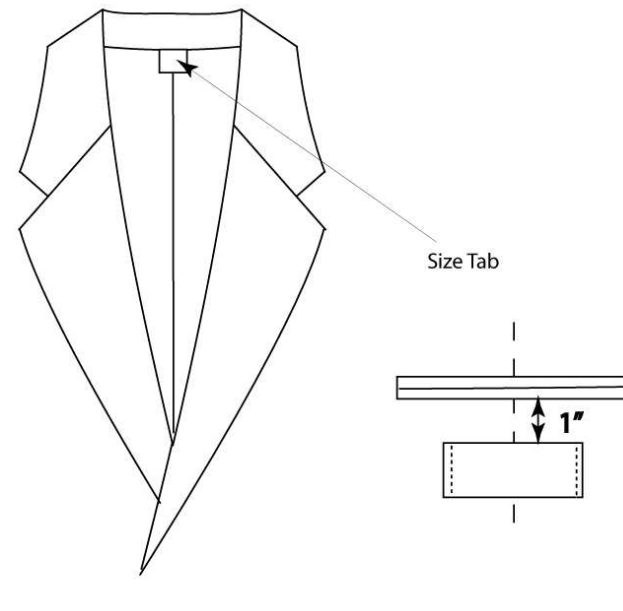
STITCH LINES

Size: 39mm x 80mm, Face: 68mm

End Fold Label

PL - EFJ - 14A

LABEL PLACEMENT



NOTE: SKETCH IS NOT REFLECTIVE OF STYLE DETAILS.

SIZE TAB:

Set tab in neckline seam at center back neck.

END FOLD LABEL:

GARMENTS WITH INNER CHEST POCKET - set End Fold Label 1" below inner left chest pocket, SNL stitch vertical ends only, center on pocket width, thread color must match label.

GARMENT WITH INNER CHEST PATCH POCKET - set End Fold Label 1 1/4" below pocket hem top edge, SNL stitch vertical ends only, center on pocket width, thread color must match label.

GARMENTS WITHOUT INNER CHEST POCKET - center End Fold Label on left front lining or left front facing, SNL stitch vertical ends only, thread color must match label.

CARE/CONTENT:

FOR UNLINED GARMENT - SNL stitch Care/Content Label to left side seam allowance 6" below armhole seam.
FOR LINED GARMENT - set Care/Content Label in lining left side seam 6" below armhole seam.

112964

MERCER BLAZER

D & A Labels Placement

Production

GA&SM-Catalog

Neither approved nor rejected

Gender

Size Range

Model #

GA&SM Style Folders

Page was edited.

Male

34-60

112964

Fabric Content

Fabric Code

Product Line

Project #

53Recycled

Polyester/42Wool/5Lycra

WOVEN

Success Apparel - SUCC

Catalog Product



LP - D&A - ST - 1

STITCH LINE	SIZE	FIT SIZE	SIZE (GENDER)
	COUNTRY OF ORIGIN	COUNTRY OF ORIGIN	COUNTRY OF ORIGIN
FOLD LINE			
STITCH LINE			

Size: 16mm x 40mm, Face: 20mm

Loop Label

NOTE: Follow individual PO for sizes that should be listed on the size tab.

For styles that are offered in different fits (PE, SH, RG LN, XL, TL, etc) - add fit code before size code.

For alpha-sized look alike styles (example: Vests) - add gender code after size code.

Womens fit should be identified by the letter "W" after the size code (Example: 16W).

LABEL EXAMPLES

8	16W	LN M	LN 32	M(F)
MADE IN TAIWAN	MADE IN TAIWAN	MADE IN TAIWAN	MADE IN TAIWAN	MADE IN TAIWAN

112964

MERCER BLAZER

Production

54% Eco-Bagir Hang Tag

GA&SM-Catalog

GA&SM Style Folders

Fabric Content

53Recycled
Polyester/42Wool/5Lycra

Neither approved nor rejected

Gender

Male

Fabric Code

WOVEN

Size Range

34-60

Product Line

Success Apparel - SUCC

Model #

112964

Project #

Catalog Product



54% Recycled



front

back

112964

MERCER BLAZER

Production

Hang Tags Placement

GA&SM-Catalog

Neither approved nor rejected

Gender

Size Range

Model #

GA&SM Style Folders

Male

34-60

112964

Fabric Content

Fabric Code

Product Line

Project #

53Recycled

Polyester/42Wool/5Lycra

WOVEN

Success Apparel - SUCC

Catalog Product



SIZE HANG TAG

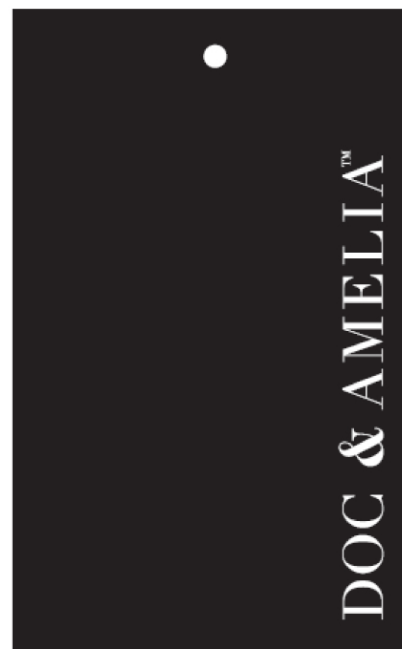
1+1/2"



3"

Placement: Set size tag through left sleeve hem through inseam.

HT-DAP-1



FRONT VIEW



BACK VIEW

DIMENSIONS: 2.2441" x 3.5827"

PLACEMENT:

TOPS - set tag through armhole seam at left side inseam.

BOTTOMS - set tag through waist seam at left side seam.

NOTE:

Set all hang tags, except Size Tag, with one swift tag.

Doc & Amelia Hang Tag should be 1st, any ECO hang tags 2nd.

If Size Tag is set in the same location, use a separate swift tag - both Doc & Amelia Hang Tag and Size Tag should be visible.

GA&SM-Catalog

Neither approved nor rejected

Gender

Size Range

Model #

GA&SM Style Folders

Male

34-60

112964

Fabric Content

Fabric Code

Product Line

Project #

53Recycled

Polyester/42Wool/5Lycra

WOVEN

Success Apparel - SUCC

Catalog Product



PSsticker-1

(Poly Bag Sticker - part 1)

PRINTING REQUIREMENTS

PRINT:

Print must be generated on thermal or laser printer.

COPYING LABELS IS NOT ACCEPTED.

Print must be a minimum of 1/4" high; black on white background.

LABEL STOCK SIZE:

Size must be a minimum of 3 1/2" long x 2" high.

LOGO:

No logo can be used.

The information must be printed on plain white stock.

CONTENT REQUIREMENTS

The following should be printed on the label:

- Style Number (6-digit Style Number and Color Code)
- Size (including fit, inseam and/or sleeve length)
- PO Number

Style#	111187-20	min 2"
Size	LN 8	
PO #	1565603	
min 3 1/2"		

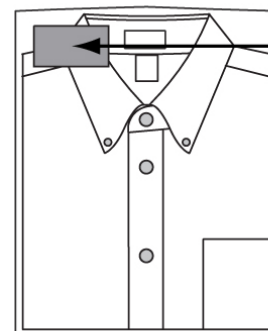
PSsticker-2

(Poly Bag Sticker - part 2)

PLACEMENT REQUIREMENTS

FLAT PACK GARMENTS:

place PS sticker in the upper left hand corner of the polybag.

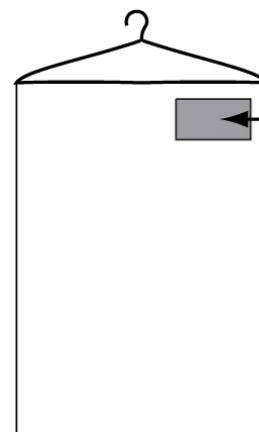


PS sticker

HANGING GARMENTS:

place PS sticker in the upper right hand corner of the polybag (the left shoulder as if you were wearing the garment).

The hanger hook opening must face the left corner.



PS sticker

Production

Catalog Product



Selected Range: 34, 36, 38, 40, 42, 44, 46, 48, 50, 52, 54, 56, 58, 60

[illegible]

112964

MERCER BLAZER

Production

Incremental & Graded Worksheets

GA&SM-Catalog

GA&SM Style Folders

Fabric Content

**53Recycled
Polyester/42Wool/5Lycra**

Neither approved nor rejected

Gender

Male

Fabric Code

WOVEN

Size Range

34-60

Product Line

Success Apparel - SUCC

Model #

112964

Project #

Catalog Product



Selected Range: 34, 36, 38, 40, 42, 44, 46, 48, 50, 52, 54, 56, 58, 60

[illegible]

112964

MERCER BLAZER

Production

Style Sheet

GA&SM-Catalog

GA&SM Style Folders

Fabric Content

53Recycled
Polyester/42Wool/5Lycra

Neither approved nor rejected

Gender

Male

Fabric Code

WOVEN

Size Range

34-60

Product Line

Success Apparel - SUCC

Model #

112964

Project #

Catalog Product



Pattern Piece Comments	Qty	Material Code	Area Piece Category	Perimeter	Unflipped	# Flip X	# Flip Y	# Flip XY	Last Modified	Modified By
112964AA		Vary By Pieces	MT ALTERATION/MEN-TOP SIZE CODE							<input checked="" type="checkbox"/>
112964-AABAK-F	2	N/A	330.3604 SQ IN	88.7474 IN	1	1	0	0	23 JUL 2009	
									BAK-FUSE	
112964-AABTMWLT-F	2	N/A	21.0879 SQ IN	20.7628 IN	1	1	0	0	23 JUL 2009	
									BTMWLT-FUSE	
112964BA		Vary By Pieces								<input checked="" type="checkbox"/>
112964-BABAK	1	N/A	573.9354 SQ IN	123.8406 IN	1	0	0	0	23 JUL 2009	
									BAK	
112964-BALSFRT	1	N/A	128.4891 SQ IN	51.5210 IN	0	1	0	0	23 JUL 2009	
									LSFRT	
112964-BARSFRT	1	N/A	128.4881 SQ IN	51.5207 IN	1	0	0	0	23 JUL 2009	
									RSFRT	
112964-BASPNL	2	N/A	114.8212 SQ IN	52.0870 IN	1	1	0	0	23 JUL 2009	
									SPNL	
112964BB		40								<input checked="" type="checkbox"/>
112964-BBBSBAG	1	N/A	60.1982 SQ IN	33.9781 IN	1	0	0	0	23 JUL 2009	
									BRSBAG	
112964-BBIPKTBAG	2	N/A	101.5000 SQ IN	43.0000 IN	1	1	0	0	23 JUL 2009	
									IPKTBAG	
112964-BBLBTMBAG	1	N/A	107.0727 SQ IN	43.3600 IN	1	0	0	0	24 JUL 2009	
									LBTMBAG	
112964CA		40								<input checked="" type="checkbox"/>
112964-CABHEM	2	N/A	18.2345 SQ IN	20.7087 IN	1	1	0	0	23 JUL 2009	
									BAKHEM-FUSIBLE	
112964-CABTMWLT	2	N/A	19.4475 SQ IN	20.4708 IN	1	1	0	0	23 JUL 2009	
									BTMWLT-FUSIBLE	
112964-CABVNT	2	N/A	25.2386 SQ IN	26.7259 IN	1	1	0	0	23 JUL 2009	
									BVNT-FUSIBLE	
112964-CAFFAC	2	N/A	165.9727 SQ IN	81.4893 IN	1	1	0	0	23 JUL 2009	
									LFAC-FUSE	
112964-CAFRT	2	N/A	327.0214 SQ IN	108.1355 IN	1	1	0	0	23 JUL 2009	
									RFRT-FUSE	
112964-CASPNL	2	N/A	125.4555 SQ IN	58.9950 IN	1	1	0	0	23 JUL 2009	
									SPNL-FUSIBLE	

112964

MERCER BLAZER

Production

Style Sheet

GA&SM-Catalog

GA&SM Style Folders

Fabric Content

53Recycled
Polyester/42Wool/5Lycra

Neither approved nor rejected

Gender

Male

Fabric Code

WOVEN

Size Range

34-60

Product Line

Success Apparel - SUCC

Model #

112964

Project #

Catalog Product



Pattern Piece Comments	Qty	Material Code	Area Piece Category	Perimeter	Unflipped	# Flip X	# Flip Y	# Flip XY	Last Modified	Modified By
112964CA	40									<input checked="" type="checkbox"/>
112964-CASTD	2	N/A	17.7775 SQ IN	28.4286 IN	1	1	0	0	23 JUL 2009	
					STD-FUSE					
112964-CATCOL	1	N/A	47.5952 SQ IN	38.6070 IN	1	0	0	0	23 JUL 2009	
					TCOL-FUSE					
112964-CATFLP	2	N/A	18.2154 SQ IN	18.9113 IN	1	1	0	0	24 JUL 2009	
					TFLP-FUSIBLE					
112964-CATSLV	2	N/A	26.2272 SQ IN	26.8786 IN	1	1	0	0	24 JUL 2009	
					TSLV-FUSIBLE					
112964-CAUSLV	2	N/A	16.0729 SQ IN	17.9643 IN	1	1	0	0	24 JUL 2009	
					USLV-FUSIBLE					
112964CB	40									<input checked="" type="checkbox"/>
112964-CBCHS1	2	N/A	112.4949 SQ IN	45.0725 IN	1	1	0	0	23 JUL 2009	
					CHS1					
112964-CBCHS2	2	N/A	35.8632 SQ IN	24.7675 IN	1	1	0	0	23 JUL 2009	
					CHS2					
112964CC	40									<input checked="" type="checkbox"/>
112964-CCCHS3	2	N/A	91.6311 SQ IN	39.5658 IN	1	1	0	0	23 JUL 2009	
					CHS3					
112964CD	40									<input checked="" type="checkbox"/>
112964-CDUCOL	1	N/A	54.4661 SQ IN	38.0796 IN	1	0	0	0	14 APR 2009	
					UCOL-FELT					

112964

MERCER BLAZER

Production

Style Sheet

GA&SM-Catalog

GA&SM Style Folders

Fabric Content

53Recycled
Polyester/42Wool/5Lycra

Neither approved nor rejected

Gender

Male

Fabric Code

WOVEN

Size Range

34-60

Product Line

Success Apparel - SUCC

Model #

112964

Project #

Catalog Product



Comments: